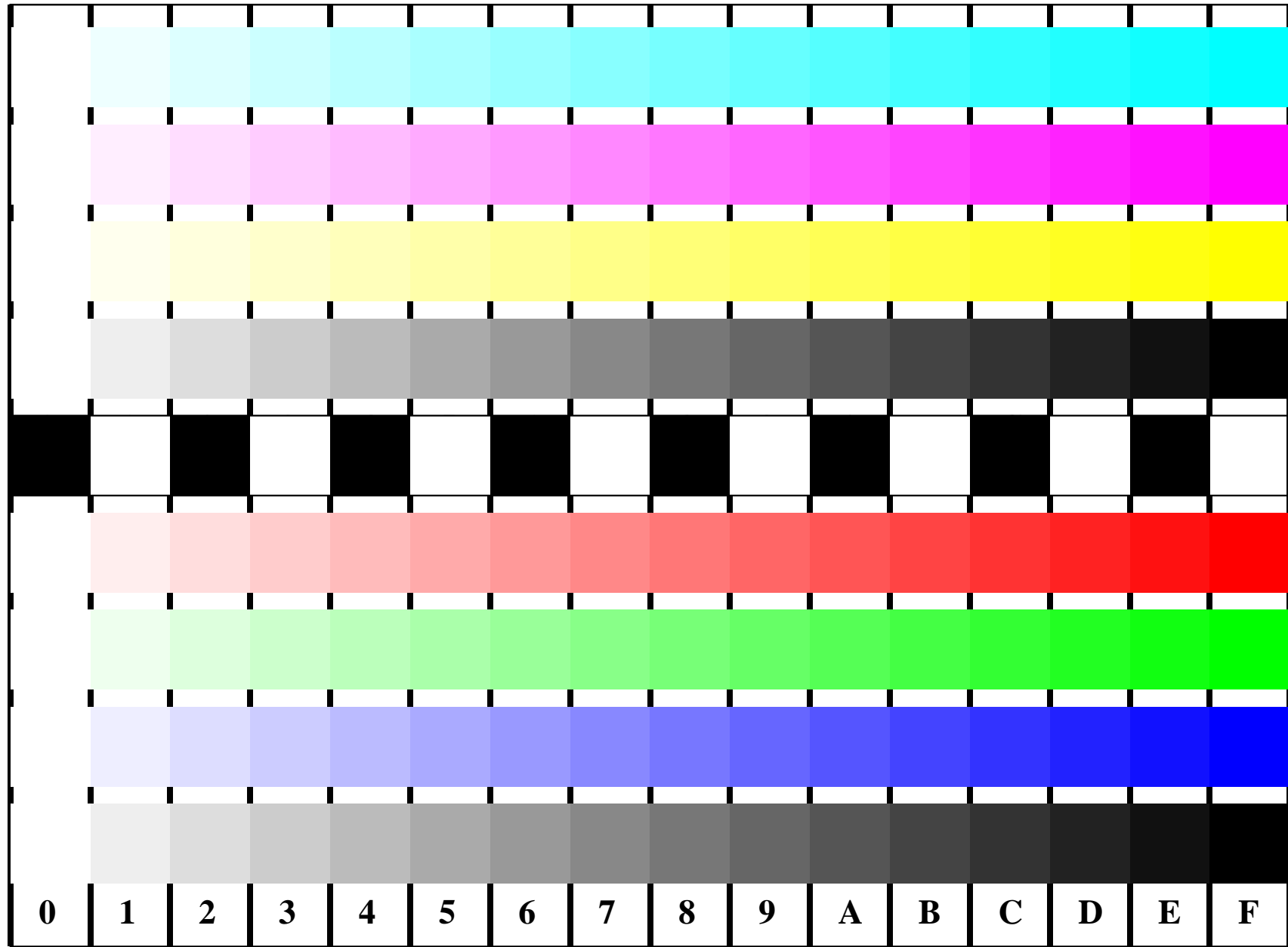


See for similar files: <http://www.ps.bam.de/EE95/EE95.HTM>  
 Information and Order: <http://www.ps.bam.de> Version 2.0, io=1,1

BAM registration: 20030101-EE95/10L/L95E02NP.PS/.PDF BAM material: code=tha4ta  
 application for measurement of monitor (Yr=2.5) and printer output



Picture B4 and D4: 16 equidistant steps **B4**: W-C, W-M, W-Y and W-N; **D4**: W-O, W-L, W-V and W-N(CMY); Use of PS operator; B4: olv\* setrgbcolor / w\* setgray; D4: olv\* setrgbcolor (only)

Fig. B4 of ISO/IEC-test chart 2 and  
 Fig. D4 of ISO/IEC-test chart no. 4;

ISO/IEC 15775 and  
 TR ISO/IEC 24705;

input: olv\* setrgbcolor / w\* setgray  
 output: no change compared to input

