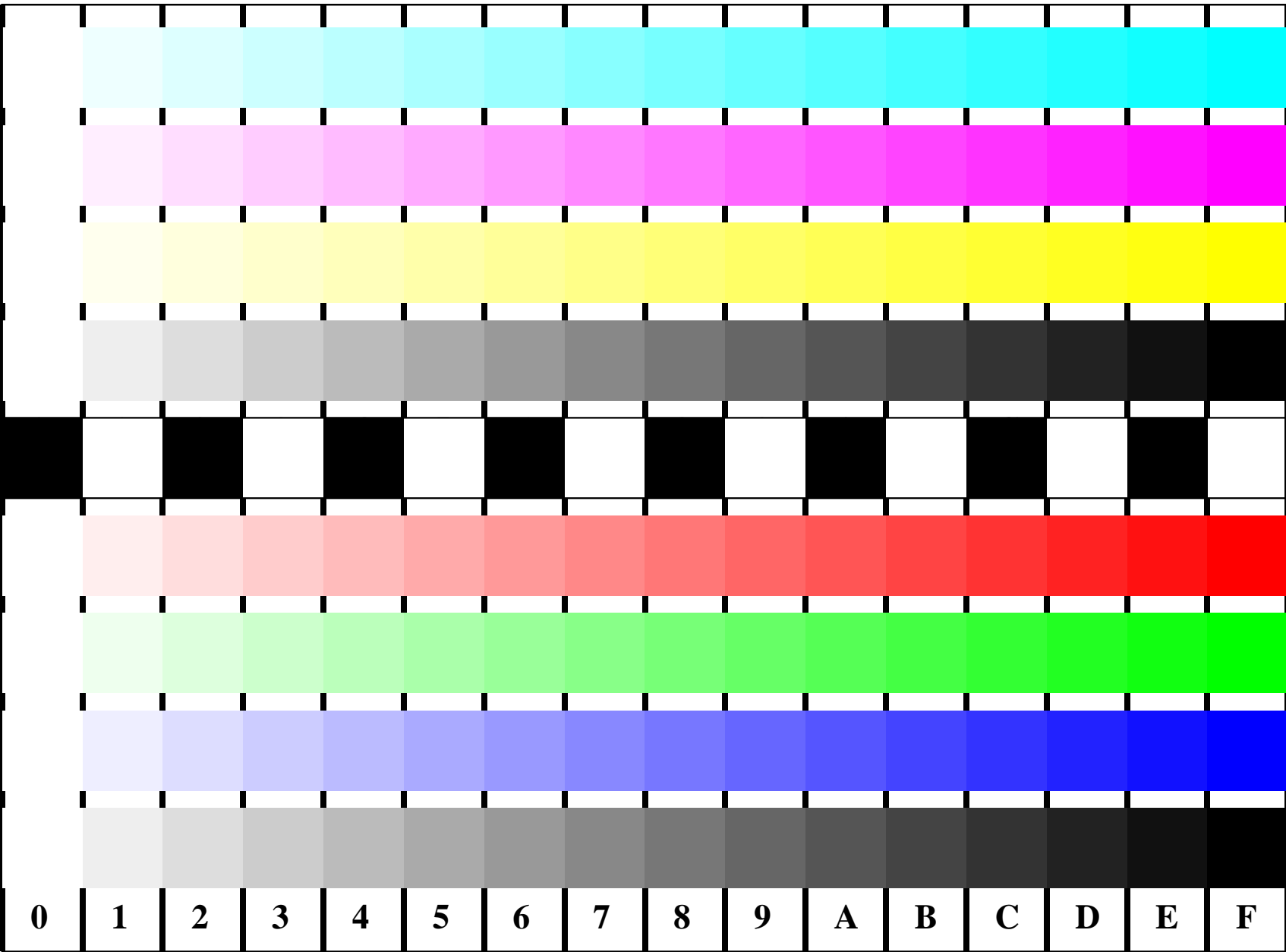


See for similar files: <http://www.ps.bam.de/EE95/EE95.HTM>  
 Information and Order: <http://www.ps.bam.de> Version 2.0, io=1,1

BAM registration: 20030101-EE95/10L/L95E05NP.PS/.PDF BAM material: code=tha4ta  
 application for measurement of monitor (Yr=2.5) and printer output



Picture B4 and D4: 16 equidistant steps *B4*: W-C, W-M, W-Y and W-N; *D4*: W-O, W-L, W-V and W-N(CMY); Use of PS operator; *B4*: *olv\* setrgbcolor / w\* setgray*; *D4*: *olv\* setrgbcolor (only)*

Fig. B4 of ISO/IEC-test chart 2 and  
 Fig. D4 of ISO/IEC-test chart no. 4;

ISO/IEC 15775 and  
 TR ISO/IEC 24705;

input: *olv\* setrgbcolor / w\* setgray*  
 output: *no change compared to input*

