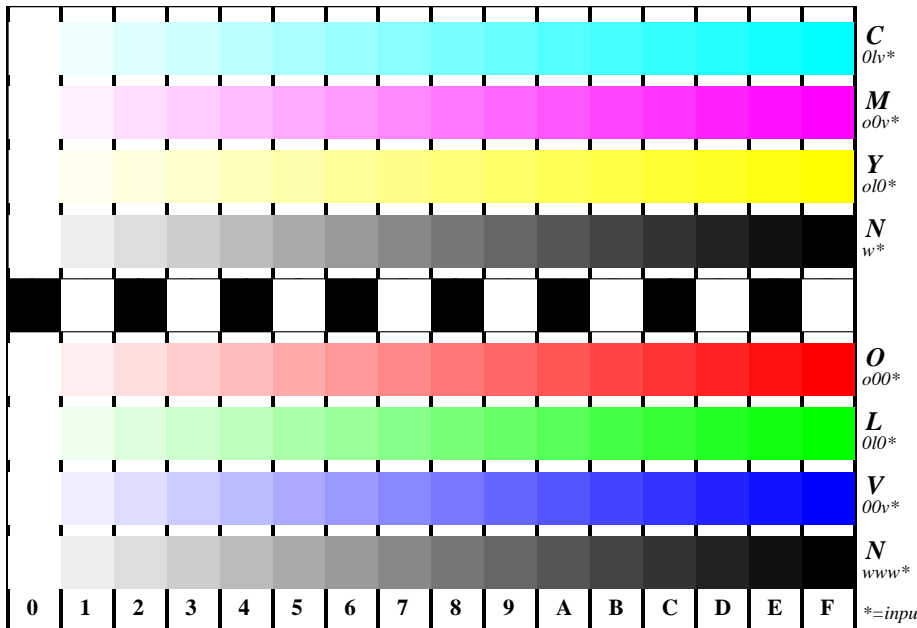


See for similar files: <http://www.ps.bam.de/EE95/EE95.HTM>
 Information and Order: <http://www.ps.bam.de> Version 2.0, io=1,1

BAM registration: 20030101-EE95/L95E00N1.PS/.TXT
 application for measurement of monitor (Y=2.5) and printer output
 BAM material: code=thata4



Picture B4 and D4: 16 equidistant steps *B4*: W-C, W-M, W-Y and W-N; *D4*: W-O, W-L, W-V and W-N(CMY); Use of PS operator; *B4*: olv* setrgbcolor / w* setgray; *D4*: olv* setrgbcolor (only)

Fig. B4 of ISO/IEC-test chart 2 and
 Fig. D4 of ISO/IEC-test chart no. 4;
 ISO/IEC 15775 and
 TR ISO/IEC 24705;
 input: olv* setrgbcolor / w* setgray
 output: no change compared to input