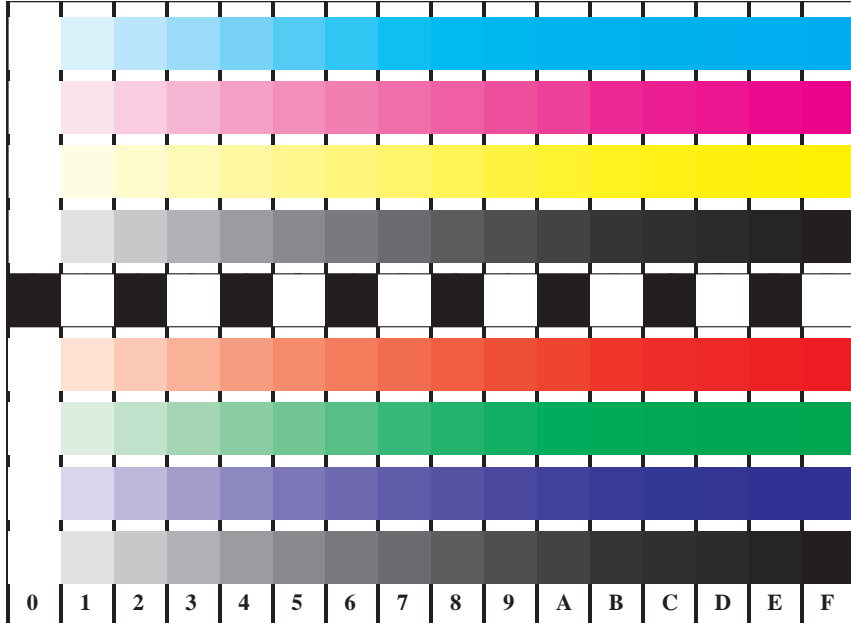


See for similar files: <http://www.ps.bam.de/EE95/EE95.HTM>
 Information and Order: <http://www.ps.bam.de> Version 2.0, io=1,0; iORS; oORS, CIELAB



C
0lv*
M
o0v*
Y
o10*
N
w*
O
o00*
L
010*
V
00v*
N
www*
*=-input

Picture B4 and D4: 16 equidistant steps B4: W-C, W-M, W-Y and W-N; D4: W-O, W-L, W-V and W-N(CMY); Use of PS operator; B4: olv* setrgbcolor / w* setgray; D4: olv* setrgbcolor (only)

Fig. B4 of ISO/IEC-test chart 2 and
 Fig. D4 of ISO/IEC-test chart no. 4;

ISO/IEC 15775 and
 TR ISO/IEC 24705;

input: olv* setrgbcolor / w* setgray
 output: cmy0* / 000n* setcmykcolor

BAM registration: 20030101-EE95/S95E00F1.PS/.TXT
 application for measurement of monitor (Yf=2.5) and printer output
 BAM material: code=thata4