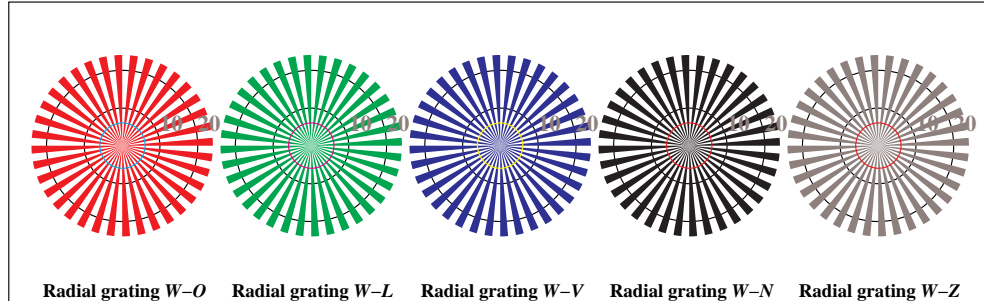




Picture D1: Flower motif, 14 CIE-test colours and 2 + 16 grey steps (nf); PS operators *settransfer*, 4 *colorimage*



Picture D2: Radial gratings W-O, W-L, W-V, W-N, and W-Z; PS operator *cmy0* setcmykcolor (only)*

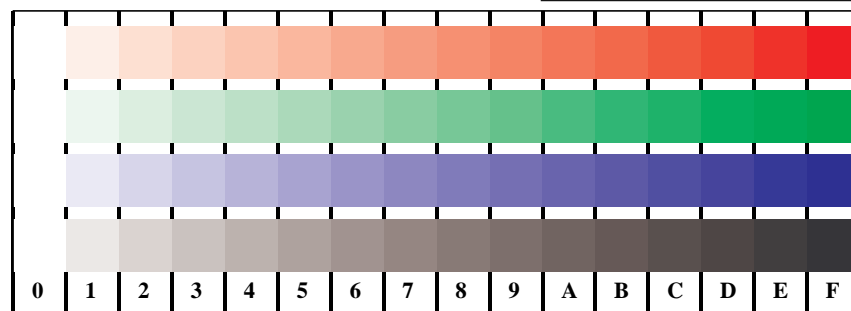


Picture D3: 14 CIE-test colours and 2 + 16 grey steps; Use of PS operator *cmy0* setcmykcolor (only)*

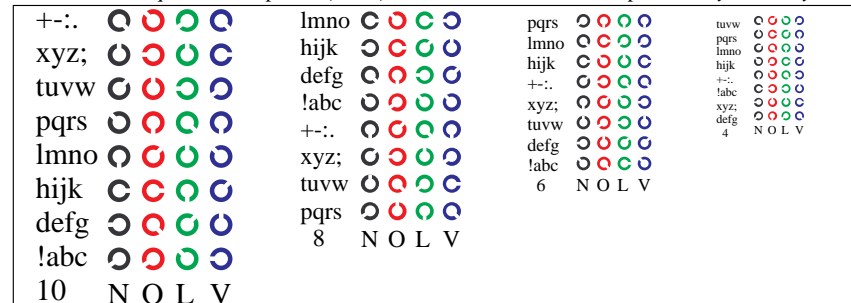


Fig. D1 to D7 of ISO/IEC-test chart 4;

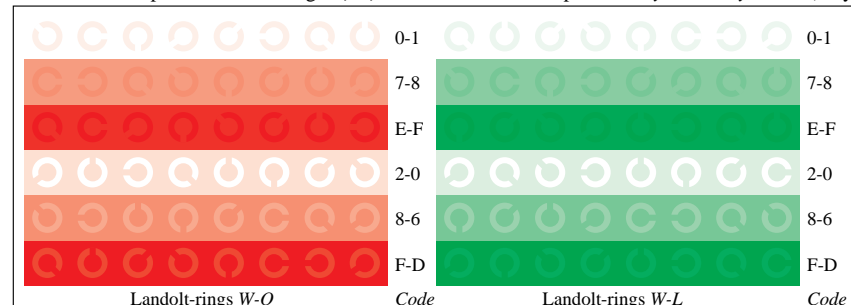
ISO/IEC 15775 and input: *cmy0* setcmykcolor (only)*
 DIS ISO/IEC 19839-X; output: *no change compared to input*



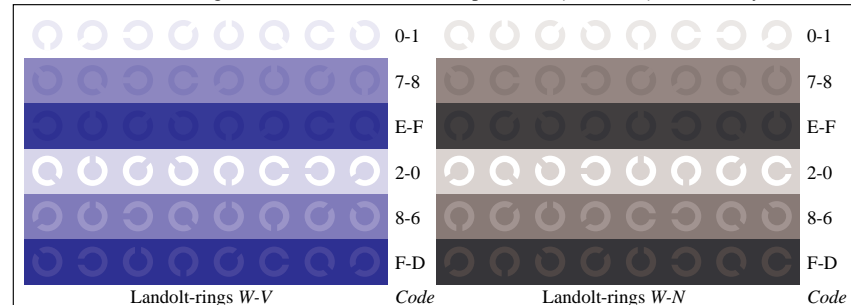
Picture D4: 16 equidistant steps W-O, W-L, W-V and W-N; Use of PS operator *cmy0* setcmykcolor (only)*



Picture D5: Script and Landolt-rings N, O, L and V; Use of PS operator *cmy0* setcmykcolor (only)*



Picture D6: Landolt-rings W-O and W-L; Use of PS operator *cmy0* setcmykcolor (only)*



Picture D7: Landolt-rings W-V and W-N; Use of PS operator *cmy0* setcmykcolor (only)*



See for similar files: <http://www.ps.bam.de/EE98/>
 Information and Order: <http://www.ps.bam.de>
 Version 2.0, io=2,2

BAM registration: 20030101-EE98/10L/L98E06NP.PS/.PDF application for monitors (Yr=2.5) and printers BAM material: code=tha4ta