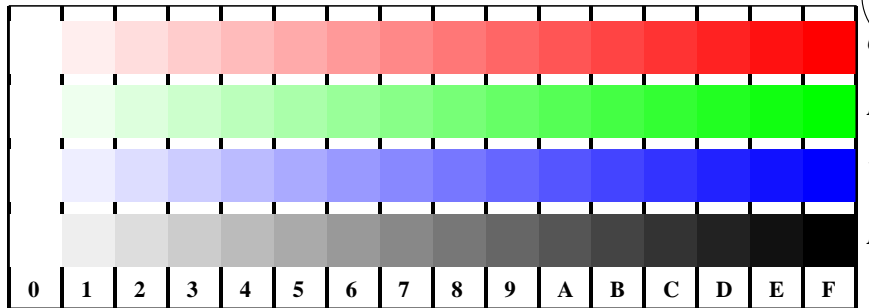
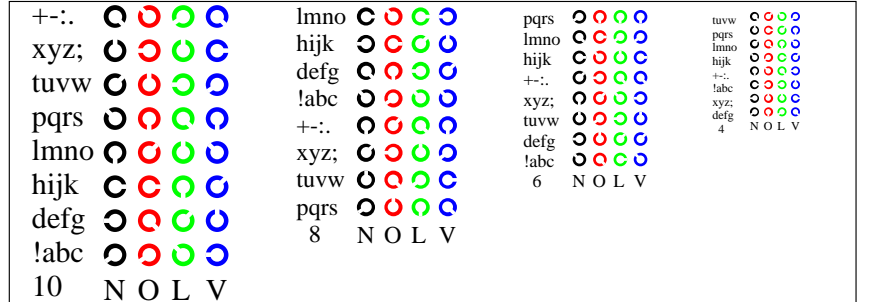


Fig. D1 to D7 of ISO/IEC-test chart 4;

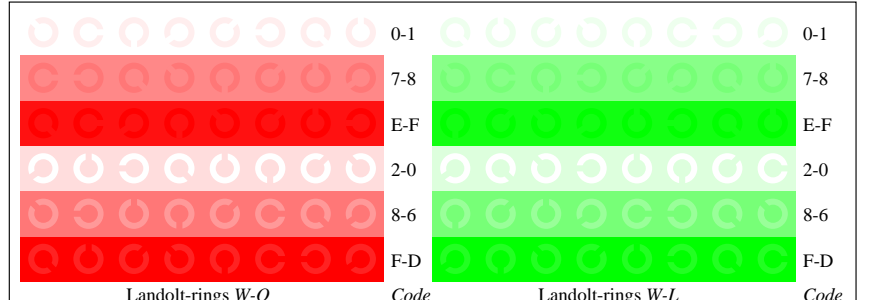
ISO/IEC 15775 and input: *LAB\* setcolor*  
 DIS ISO/IEC 19839-X; output: *olv\*/www\* setrgbcolor*



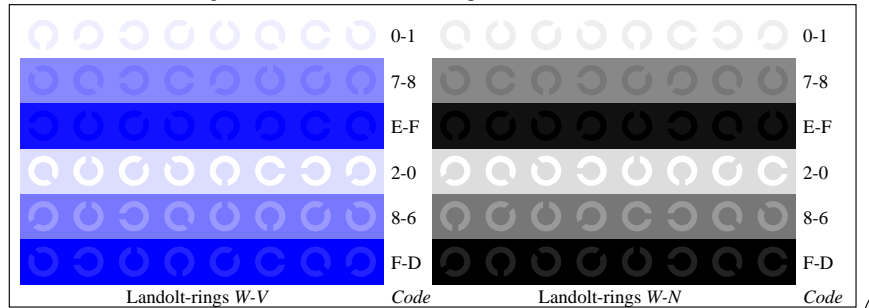
Picture D4: 16 equidistant steps W-O, W-L, W-V and W-N; Use of PS operator *LAB\* setcolor*



Picture D5: Script and Landolt-rings N, O, L and V; Use of PS operator *LAB\* setcolor*



Picture D6: Landolt-rings W-O and W-L; Use of PS operator *LAB\* setcolor*



Picture D7: Landolt-rings W-V and W-N; Use of PS operator *LAB\* setcolor*

See for similar files: <http://www.ps.bam.de/DE94/DE94.HTM>  
 Information and Order: <http://www.ps.bam.de>  
 Version 2.0, io=5,3; iORS; oORS, CIELAB

BAM registration: 20030101-FE94/10L/L94E03FP.PS/.PDF    application for monitors (Yr=2.5) and printers    BAM material: code=tha4ta