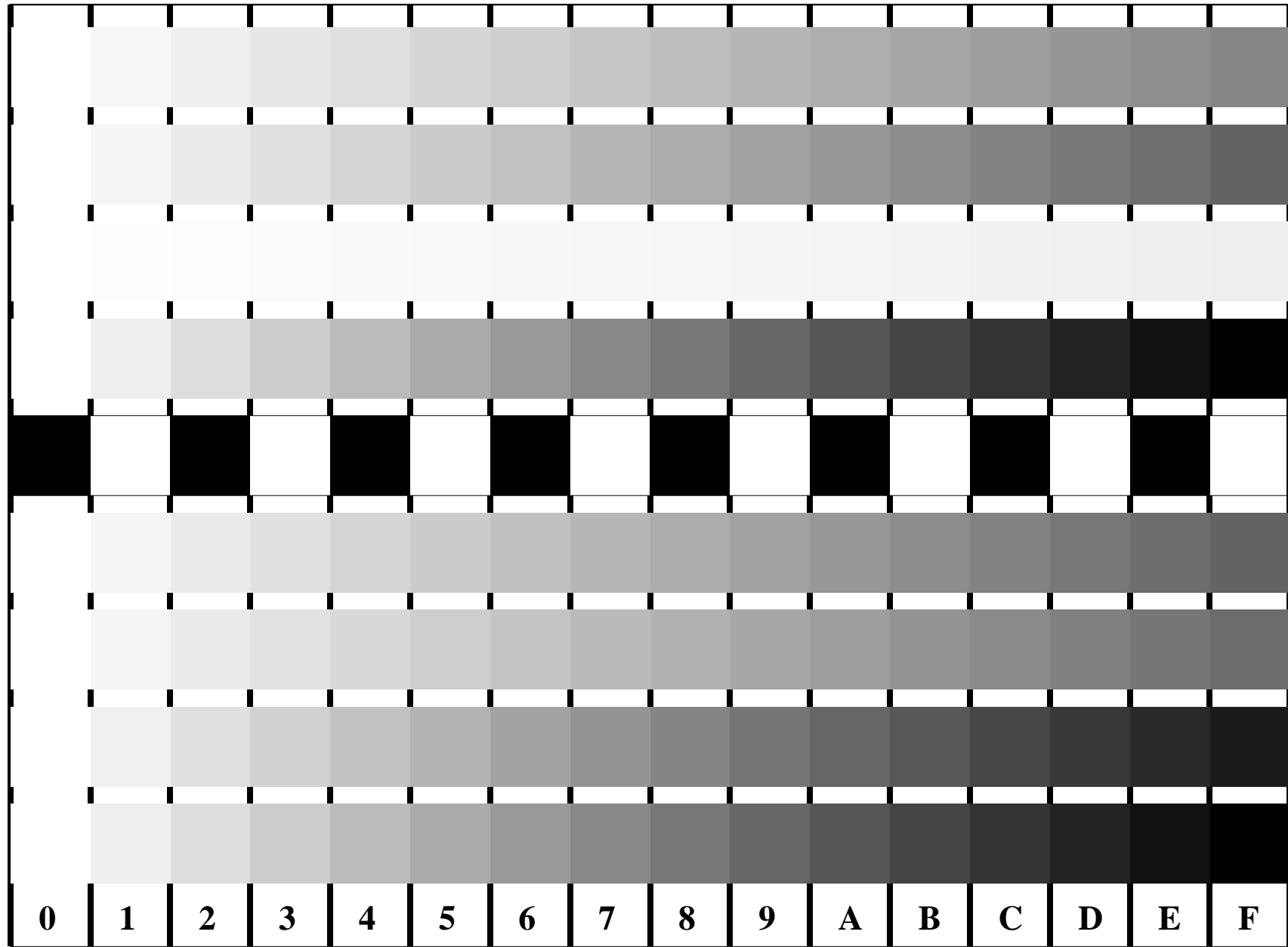


See for similar files: <http://www.ps.bam.de/FE95/FE95.HTM>
Information and Order: <http://www.ps.bam.de> Version 2.0, io=5,7; iORS; oORS, CIELAB

BAM registration: 20030101-FE95/10F/F95E07FP.PS/.PDF
application for measurement of monitor (Yr=2.5) and printer output
BAM material: code=tha4ta



C
*LAB**
M
*LAB**
Y
*LAB**
N
*LAB**
O
*LAB**
L
*LAB**
V
*LAB**
N
*LAB**

Figure B4 and D4 of the ISO/IEC-test charts no. 2 and 4; 16 visual equidistant steps of colour series; Use of the PS operator *LAB* setcolor*

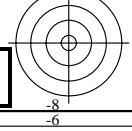
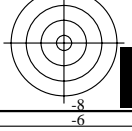


Fig. B4 of ISO/IEC-test chart 2 and
Fig. D4 of ISO/IEC-test chart no. 4;

ISO/IEC 15775 and
TR ISO/IEC 24705;

input: *LAB* setcolor*
output: *w* setgray*

