



See for similar files: <http://www.ps.bam.de/FE95/FE95.HTM>
Information and Order: <http://www.ps.bam.de> Version 2.0, io=5,7; iORS; oORS, CIELAB

BAM registration: 20030101-FE95/100/O95E07FP.PS/.PDF BAM material: code=tha4ta
application for measurement of monitor (Yr=2.5) and printer output

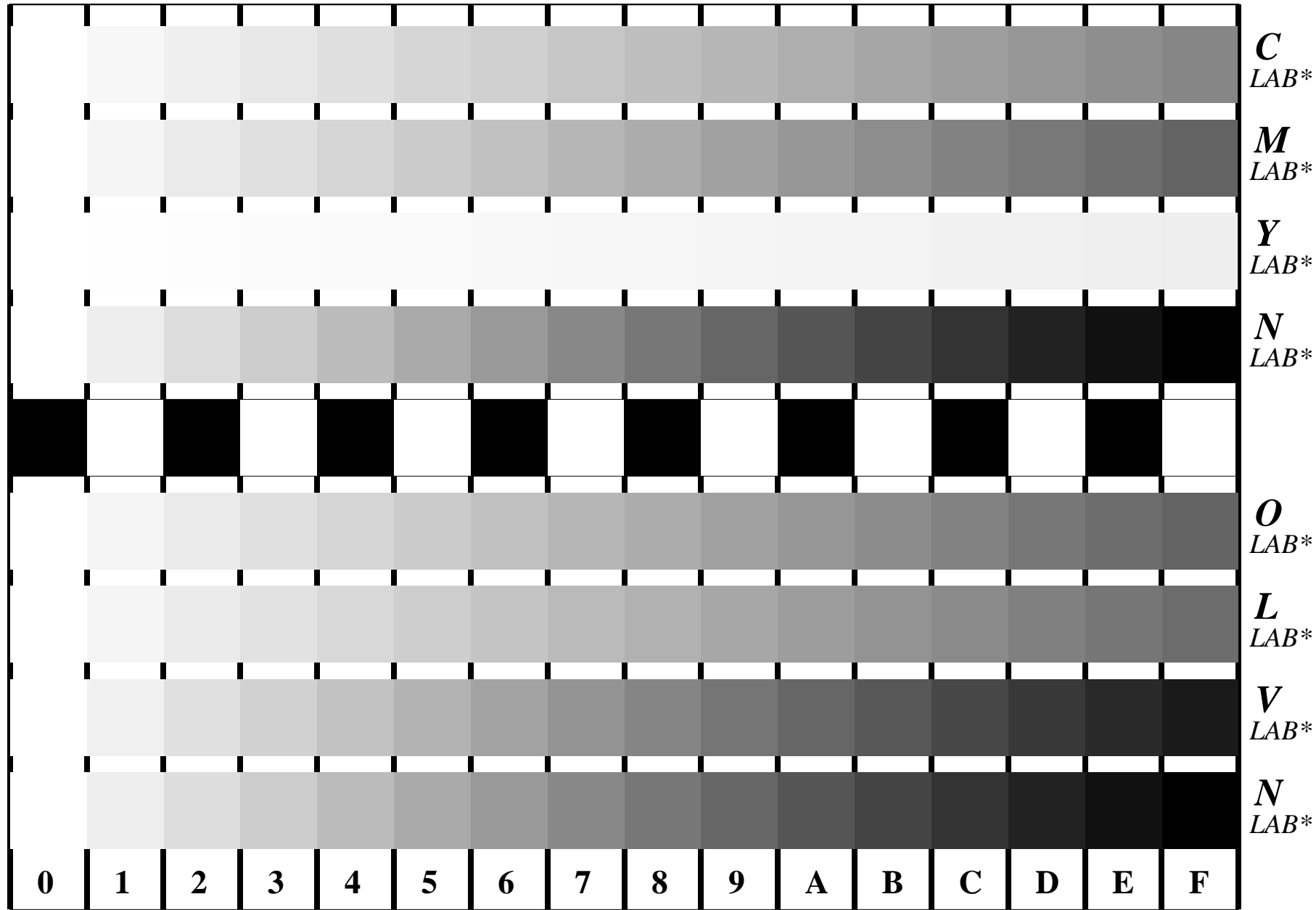


Figure B4 and D4 of the ISO/IEC-test charts no. 2 and 4; 16 visual equidistant steps of colour series; Use of the PS operator *LAB* setcolor*

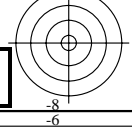
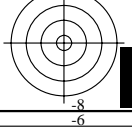


	Fig. B4 of ISO/IEC-test chart 2 and Fig. D4 of ISO/IEC-test chart no. 4;	ISO/IEC 15775 and TR ISO/IEC 24705;	input: <i>LAB* setcolor</i> output: <i>w* setgray</i>	
--	---	--	--	--