

See for similar files: <http://www.ps.bam.de/FE95/FE95.HTM>  
Information and Order: <http://www.ps.bam.de> Version 2.0, io=5,6; iORS; oORS, CIELAB

BAM registration: 20030101-FE95/10Q/Q95E06FP.PS/.PDF BAM material: code=tha4ta  
application for measurement of monitor (Yr=2.5) and printer output

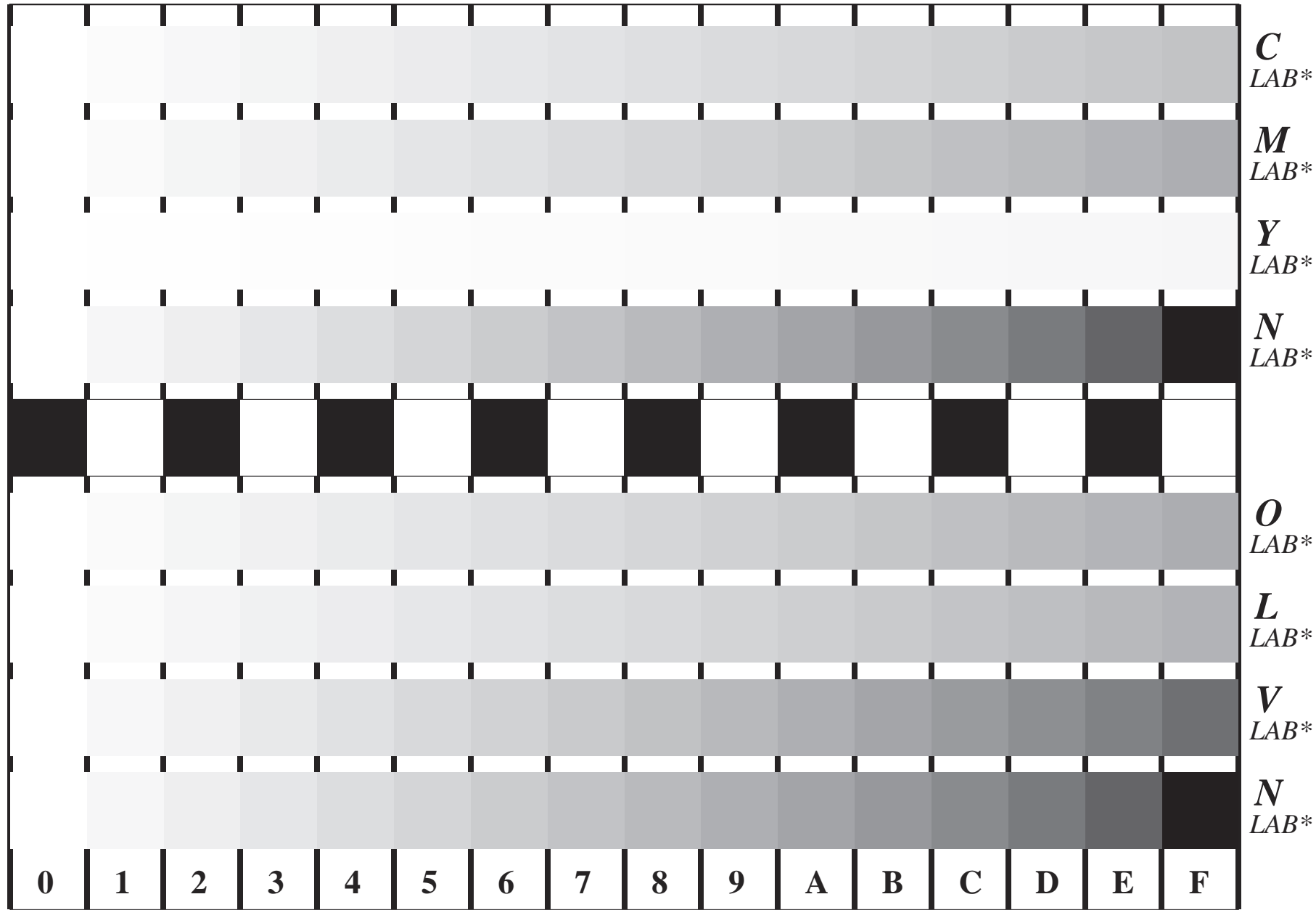


Figure B4 and D4 of the ISO/IEC-test charts no. 2 and 4; 16 visual equidistant steps of colour series; Use of the PS operator *LAB\* setcolor*

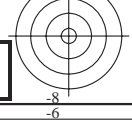
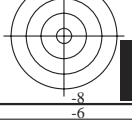


Fig. B4 of ISO/IEC-test chart 2 and  
Fig. D4 of ISO/IEC-test chart no. 4;

ISO/IEC 15775 and  
TR ISO/IEC 24705;

input: *LAB\* setcolor*  
output: *000n\* setcmykcolor*

