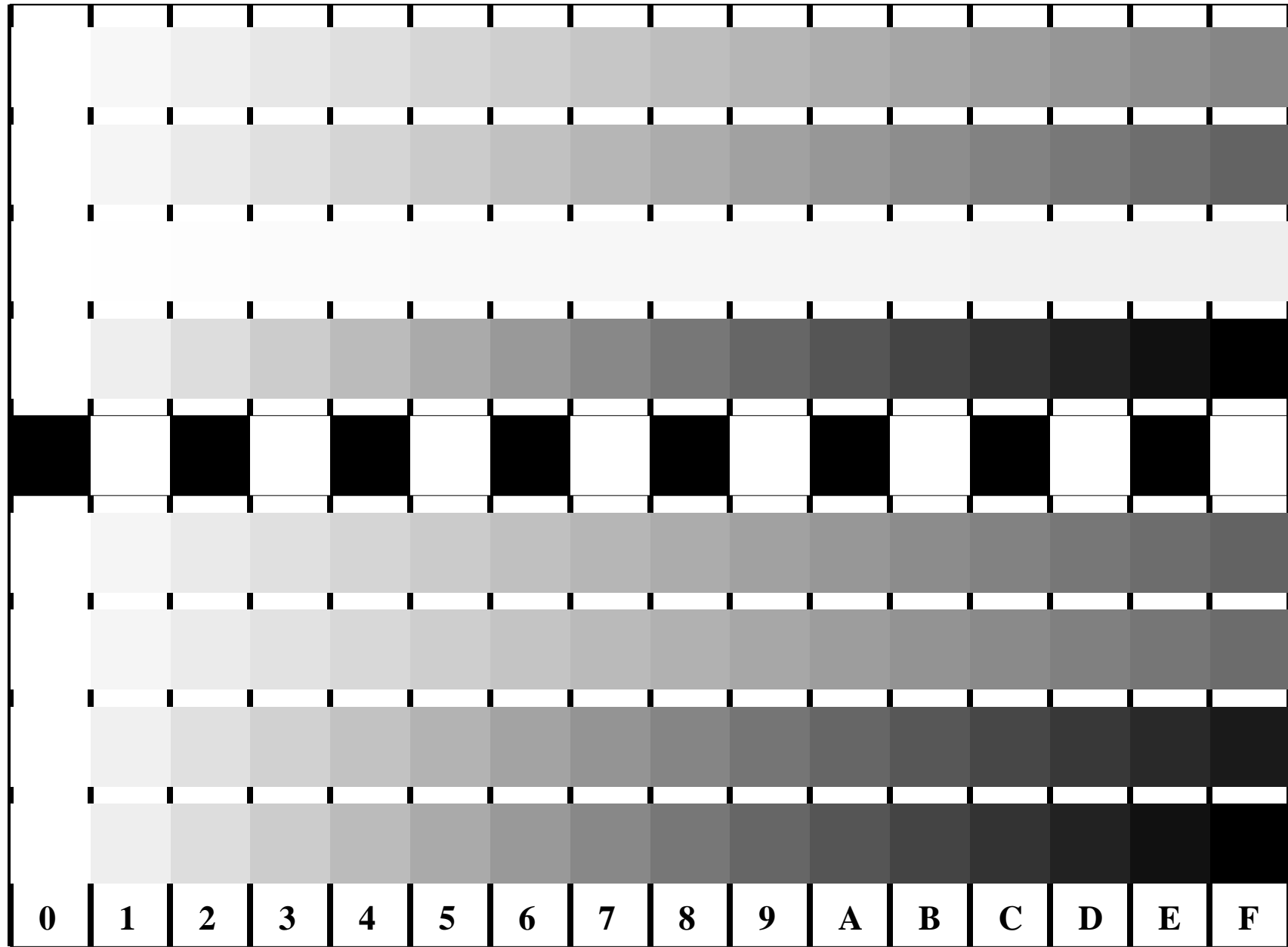


See for similar files: <http://www.ps.bam.de/FE95/FE95.HTM>
Information and Order: <http://www.ps.bam.de> Version 2.0, io=5,7; iORS; oORS, CIELAB

BAM registration: 20030101-FE95/10T/T95E07FP.PS.PDF BAM material: code=rha4ta
application for measurement of monitor (Yr=2.5) and printer output



C
*LAB**
M
*LAB**
Y
*LAB**
N
*LAB**
O
*LAB**
L
*LAB**
V
*LAB**
N
*LAB**

Figure B4 and D4 of the ISO/IEC-test charts no. 2 and 4; 16 visual equidistant steps of colour series; Use of the PS operator *LAB* setcolor*

