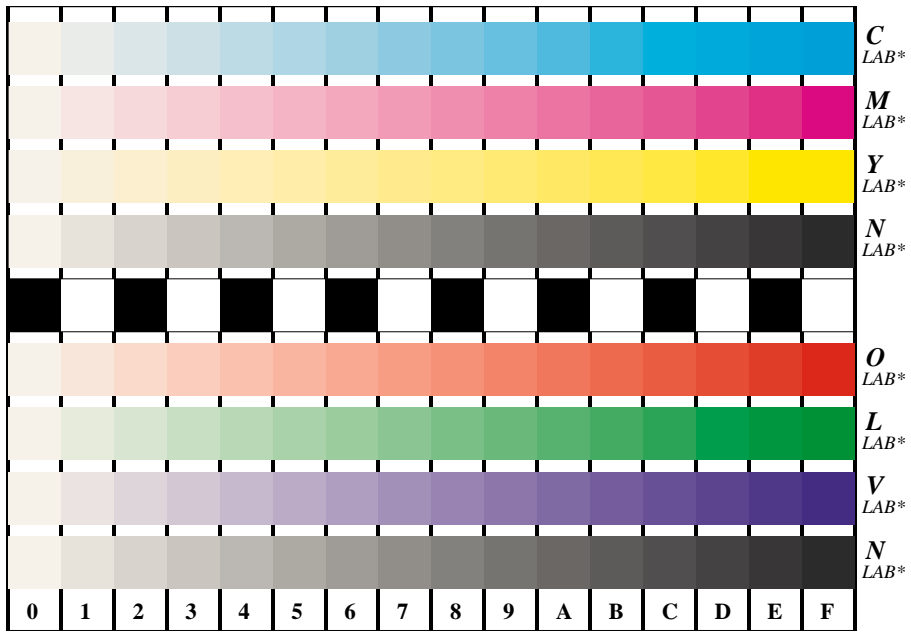


See for similar files: <http://www.ps.bam.de/FE95/FE95.HTM>  
Information and Order: <http://www.ps.bam.de> Version 2.0, io=5,5



BAM registration: 20030101-FE95/F95E00N1.PS/.TXT  
application for measurement of monitor (Yf=2,5) and printer output  
BAM material: code=thata

Figure B4 and D4 of the ISO/IEC-test charts no. 2 and 4; 16 visual equidistant steps of colour series; Use of the PS operator *LAB\*setcolor*

Fig. B4 of ISO/IEC-test chart 2 and Fig. D4 of ISO/IEC-test chart no. 4; ISO/IEC 15775 and TR ISO/IEC 24705; input: *LAB\*setcolor* output: *no change compared to input*