

See for similar files: <http://www.ps.bam.de/FE95/FE95.HTM>
 Information and Order: <http://www.ps.bam.de> Version 2.0, io=5,0; iORS; oORS, CIELAB

BAM registration: 20030101-FE95/Q95E00F1.PS/.TXT
 application for measurement of monitor (Y=2.5) and printer output
 BAM material: code=theta4

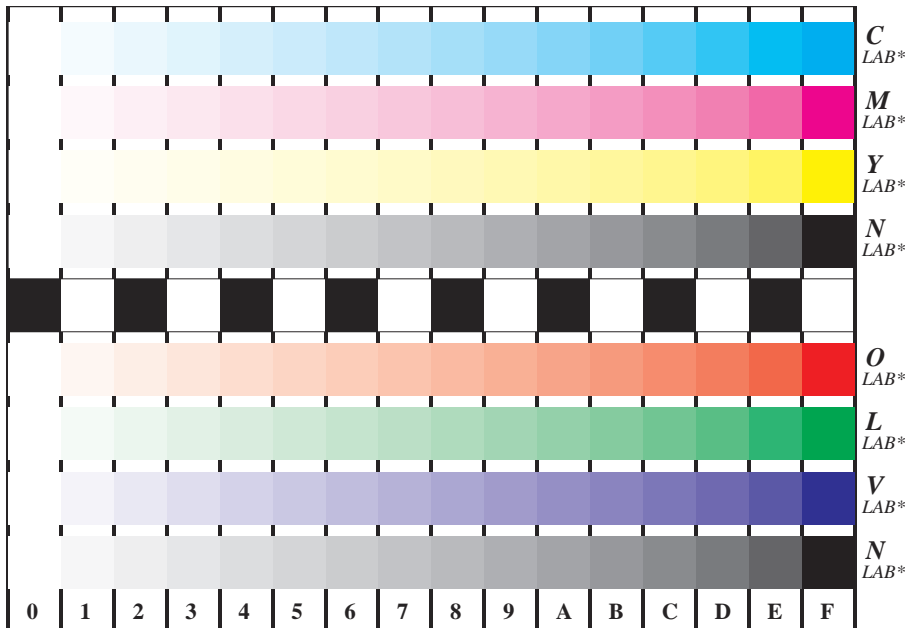


Figure B4 and D4 of the ISO/IEC-test charts no. 2 and 4; 16 visual equidistant steps of colour series; Use of the PS operator *LAB*setcolor*

Fig. B4 of ISO/IEC-test chart 2 and
 Fig. D4 of ISO/IEC-test chart no. 4;

ISO/IEC 15775 and
 TR ISO/IEC 24705;

input: *LAB*setcolor*
 output: *cmY0*/000n*setcmYkcolor*