

See for similar files: <http://www.ps.bam.de/FE95/FE95.HTM>  
 Information and Order: <http://www.ps.bam.de> Version 2.0, io=5,0; iORS; oORS; CIELAB

BAM registration: 20030101-FE95/T95E00F1.PS/.TXT  
 application for measurement of monitor (Yr=2.5) and printer output  
 BAM material: code=thata

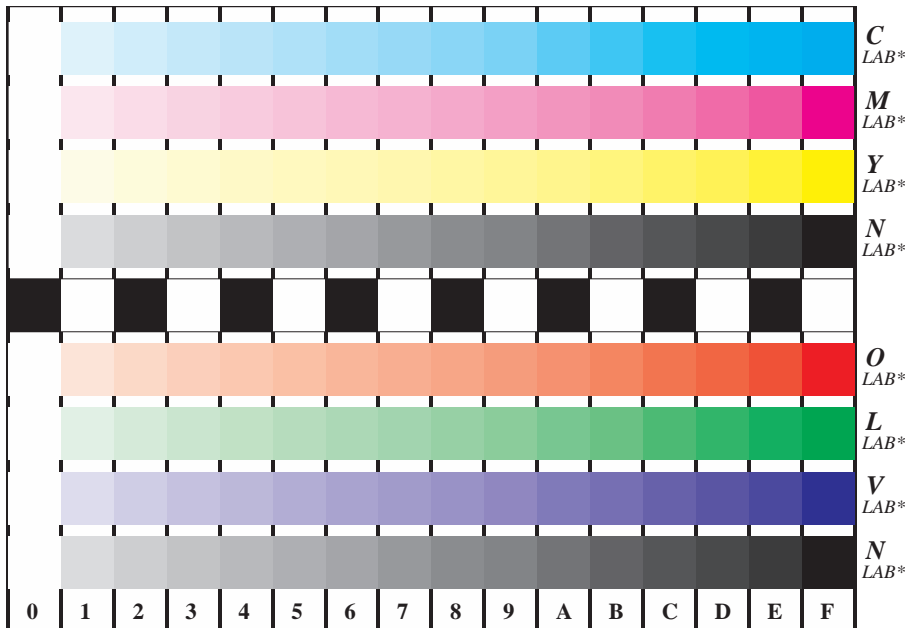


Figure B4 and D4 of the ISO/IEC-test charts no. 2 and 4; 16 visual equidistant steps of colour series; Use of the PS operator *LAB\*setcolor*

Fig. B4 of ISO/IEC-test chart 2 and Fig. D4 of ISO/IEC-test chart no. 4; ISO/IEC 15775 and TR ISO/IEC 24705; input: *LAB\*setcolor* output: *cmY0\*/000n\*setcmYkcolor*