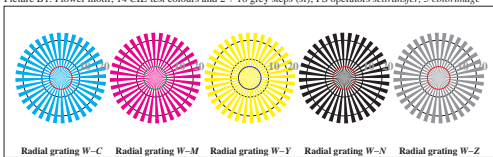




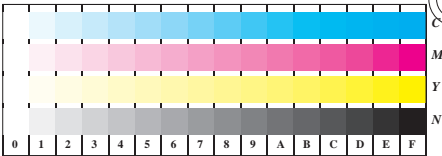
Picture B1: Flower motif, 14 CIE-test colours and 2 + 16 grey steps (s); PS operators *settransfer*, 3 *colorimage*



Picture B2: Radial gratings W-C, W-L, W-Y, W-N, and W-Z. PS operator *olv* setrgbcolor / w* setgray*



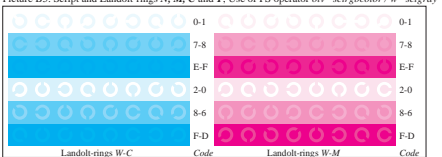
Picture B3: 14 CIE-test colours and 2 + 16 grey steps; Use of PS operator *olv* setcolor / w* setgray*



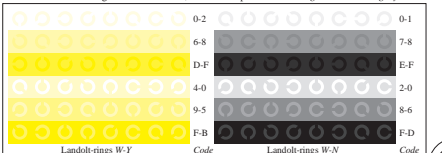
Picture B4: 16 equidistant steps W-C, W-M, W-Y and W-N; PS operator *olv* setrgbcolor / w* setgray*



Picture B5: Script and Landt-rings N, M, C and Y; Use of PS operator *olv* setrgbcolor / w* setgray*



Picture B6: Landt-rings W-C and W-M; Use of PS operator *olv* setrgbcolor / w* setgray*



Picture B7: Landt-rings W-Y and W-N; Use of PS operator *olv* setrgbcolor / w* setgray*

Fig. B1 to B7 of ISO/IEC-test chart 2; ISO/IEC 15775 and DIS ISO/IEC 19839-X; input: *olv* setrgbcolor / w* setgray* output: *cmY0*/000n* setcmykcolor*