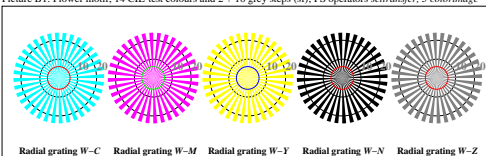


image pixel: 192 x 128  
 384 x 256  
 768 x 512  
 1536 x 1024  
 3072 x 2048

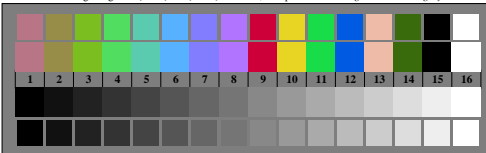
See for similar files: <http://www.ps.bam.de/FE97/>  
 Information and Order: <http://www.ps.bam.de>  
 Version 2.0, io=1.1



Picture B1: Flower motif, 14 CIE-test colours and 2 + 16 grey steps (sf); PS operators *settransfer*, 3 *colorimage*

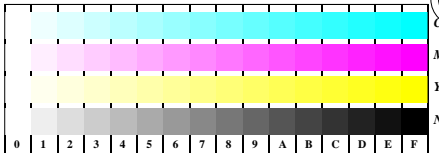


Picture B2: Radial gratings W-C, W-L, W-Y, W-N, and W-Z; PS operator *olv\* setrgbcolor / w\* setgray*



Picture B3: 14 CIE-test colours and 2 + 16 grey steps; Use of PS operator *olv\* setcolor / w\* setgray*

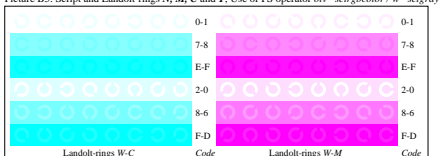
Fig. B1 to B7 of ISO/IEC-test chart 2; ISO/IEC 15775 and DIS ISO/IEC 19839-X; output: *no change compared to input*



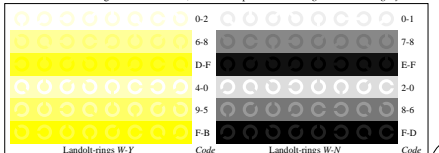
Picture B4: 16 equidistant steps W-C, W-M, W-Y and W-N; PS operator *olv\* setrgbcolor / w\* setgray*



Picture B5: Script and Landt-rings N, M, C and Y; Use of PS operator *olv\* setrgbcolor / w\* setgray*



Picture B6: Landt-rings W-C and W-M; Use of PS operator *olv\* setrgbcolor / w\* setgray*



Picture B7: Landt-rings W-Y and W-N; Use of PS operator *olv\* setrgbcolor / w\* setgray*

BAM registration: 20030101-1FE97/L97E00N1.PS/.TXT  
 application for monitors (Gamma=2.5) and printers  
 BAM material: code=thata