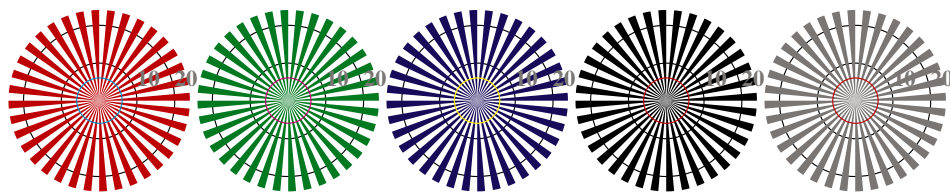


image pixel: 192 x 128
 384 x 256
 768 x 512
 1536 x 1024
 3072 x 2048



Picture D1: Flower motif, 14 CIE-test colours and 2 + 16 grey steps (nf); PS operators *settransfer*, 4 *colorimage*



Radial grating W-O Radial grating W-L Radial grating W-V Radial grating W-N Radial grating W-Z

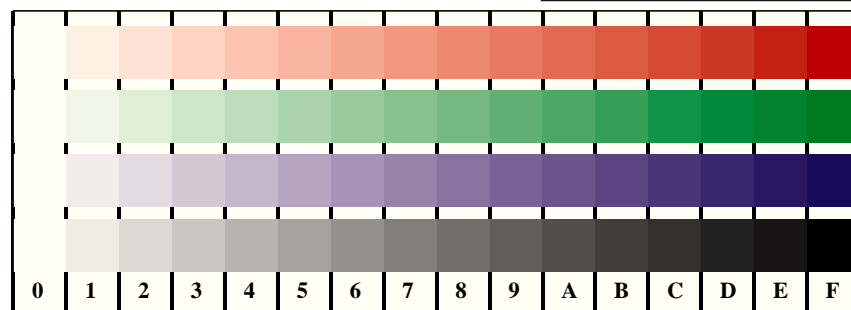
Picture D2: Radial gratings W-O, W-L, W-V, W-N, and W-Z; PS operator *cmY0* setcmykcolor* (only)



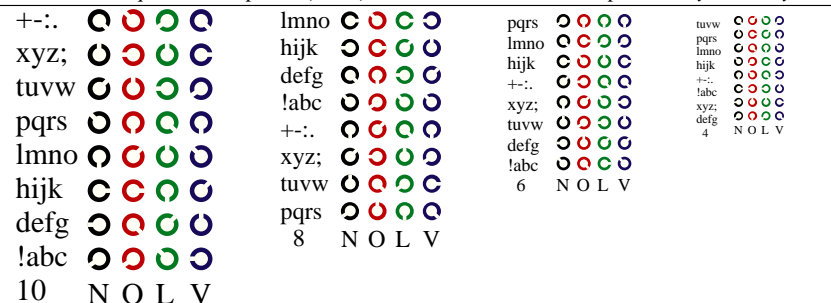
Picture D3: 14 CIE-test colours and 2 + 16 grey steps; Use of PS operator *cmY0* setcmykcolor* (only)

Fig. D1 to D7 of ISO/IEC-test chart 4;

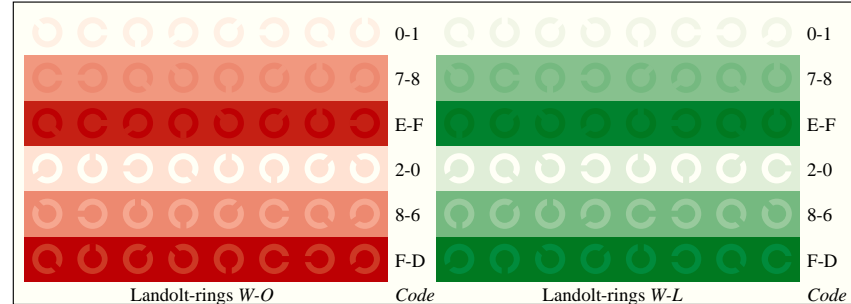
ISO/IEC 15775 and input: *cmY0* setcmykcolor* (only)
 DIS ISO/IEC 19839-X; output: *lab* setcolor*



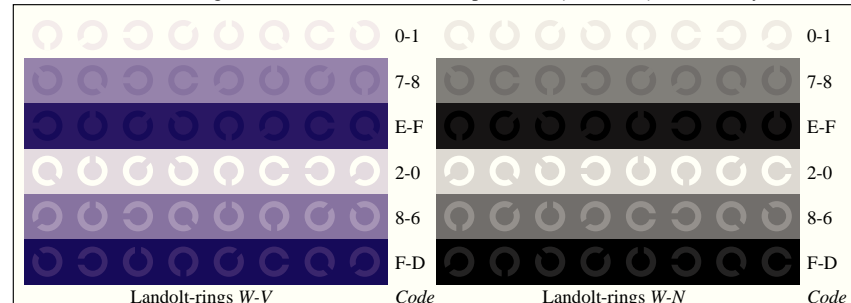
Picture D4: 16 equidistant steps W-O, W-L, W-V and W-N; Use of PS operator *cmY0* setcmykcolor* (only)



Picture D5: Script and Landolt-rings N, O, L and V; Use of PS operator *cmY0* setcmykcolor* (only)



Picture D6: Landolt-rings W-O and W-L; Use of PS operator *cmY0* setcmykcolor* (only)



Picture D7: Landolt-rings W-V and W-N; Use of PS operator *cmY0* setcmykcolor* (only)