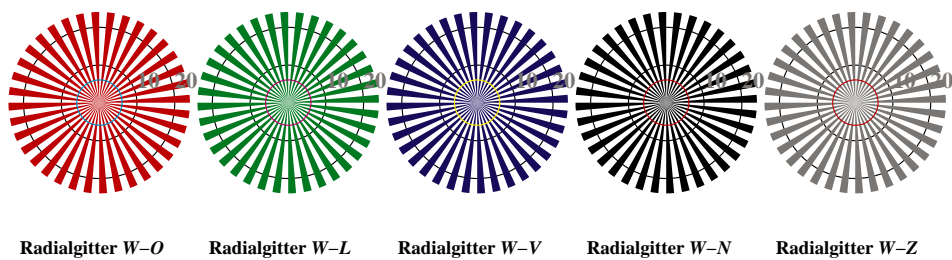




Bildpixel: 192 x 128
 384 x 256
768 x 512
 1536 x 1024
 3072 x 2048



Bild D1: Blumenmotiv, 14 CIE-Prüfbarben sowie 2 + 16 Graustufen (nf); PS-Operatoren *settransfer*, *4 colorimage*



Radialgitter W-O Radialgitter W-L Radialgitter W-V Radialgitter W-N Radialgitter W-Z

Bild D2: Radialgitter W-O, W-L, W-V, W-N und W-Z; PS-Operator *cmY0* setcmykcolor* (only)



Bild D3: 14 CIE-Prüfbarben sowie 2 + 16 Graustufen; PS-operator *cmY0* setcmykcolor* (only)

Fig. D1 bis D7; ISO/IEC-Prüfvorlage 4; ISO/IEC 15775 und input: *cmY0* setcmykcolor* (only)
 DIS ISO/IEC 19839-X; output: *lab* setcolor*

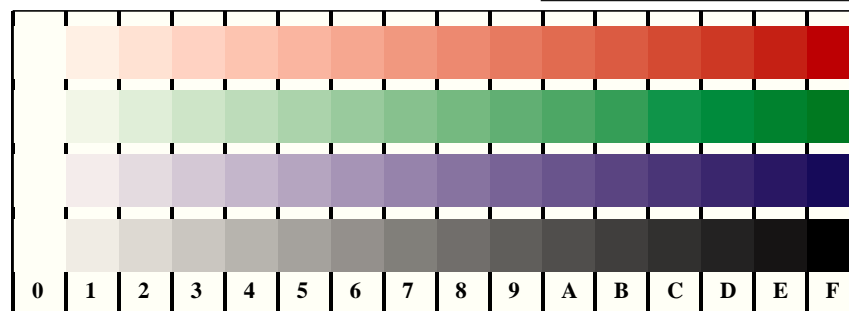


Bild D4: 16 gleichabständige Stufen W-O, W-L, W-V und W-N; PS-Operator *cmY0* setcmykcolor* (only)

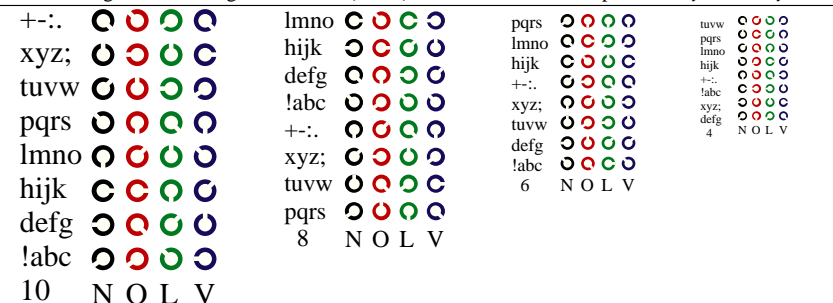


Bild D5: Schrift und Landoltringe N, O, L und V; PS-Operator *cmY0* setcmykcolor* (only)

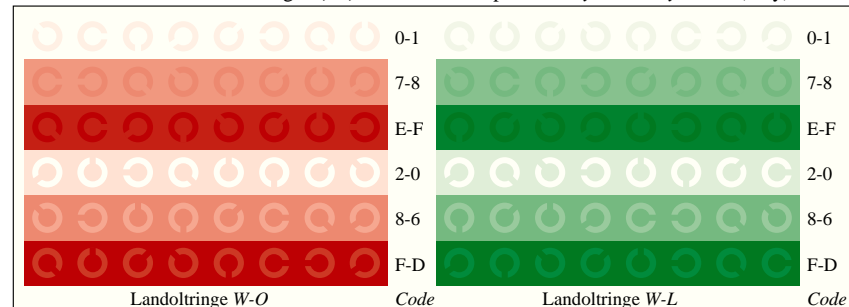


Bild D6: Landoltringe W-O und W-L; PS-Operator *cmY0* setcmykcolor* (only)

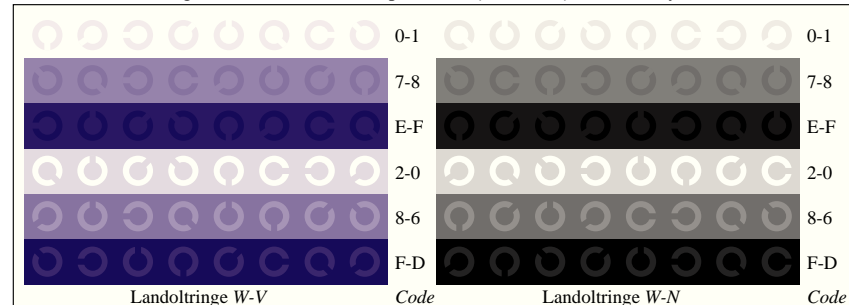


Bild D7: Landoltringe W-V und W-N; PS-Operator *cmY0* setcmykcolor* (only)