



Bild D1: Blumenmotiv, 14 CIE-Prüffarben sowie 2 + 16 Graustufen (nf); PS-Operatoren settransfer, 4 colorimage

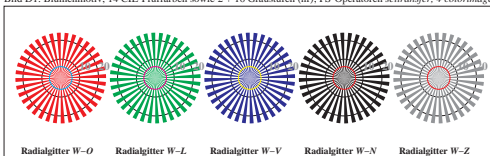


Bild D2: Radialgitter W-O, W-L, W-V, W-N und W-Z; PS-Operator cmy0* setcmymcolor (only)

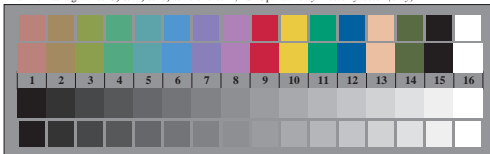


Bild D3: 14 CIE-Prüffarben sowie 2 + 16 Graustufen; PS-operator cmy0* setcmymcolor (only)

Fig. D1 bis D7; ISO/IEC-Prüfvorlage 4; ISO/IEC 15775 und input: cmy0* setcmymcolor (only)
 DIS ISO/IEC 19839-X; output: cmy0*/000n* setcmymcolor

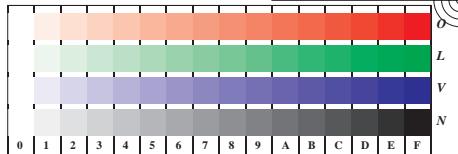


Bild D4: 16 gleichabständige Stufen W-O, W-L, W-V und W-N; PS-Operator cmy0* setcmymcolor (only)



Bild D5: Schrift und Landolringe N, O, L und V; PS-Operator cmy0* setcmymcolor (only)

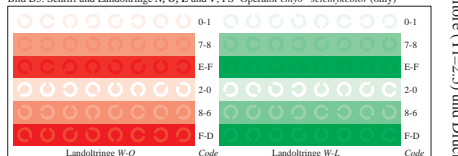


Bild D6: Landolringe W-O und W-L; PS-Operator cmy0* setcmymcolor (only)

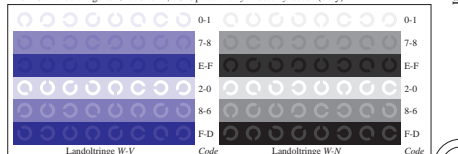


Bild D7: Landolringe W-V und W-N; PS-Operator cmy0* setcmymcolor (only)