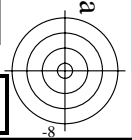
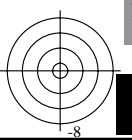
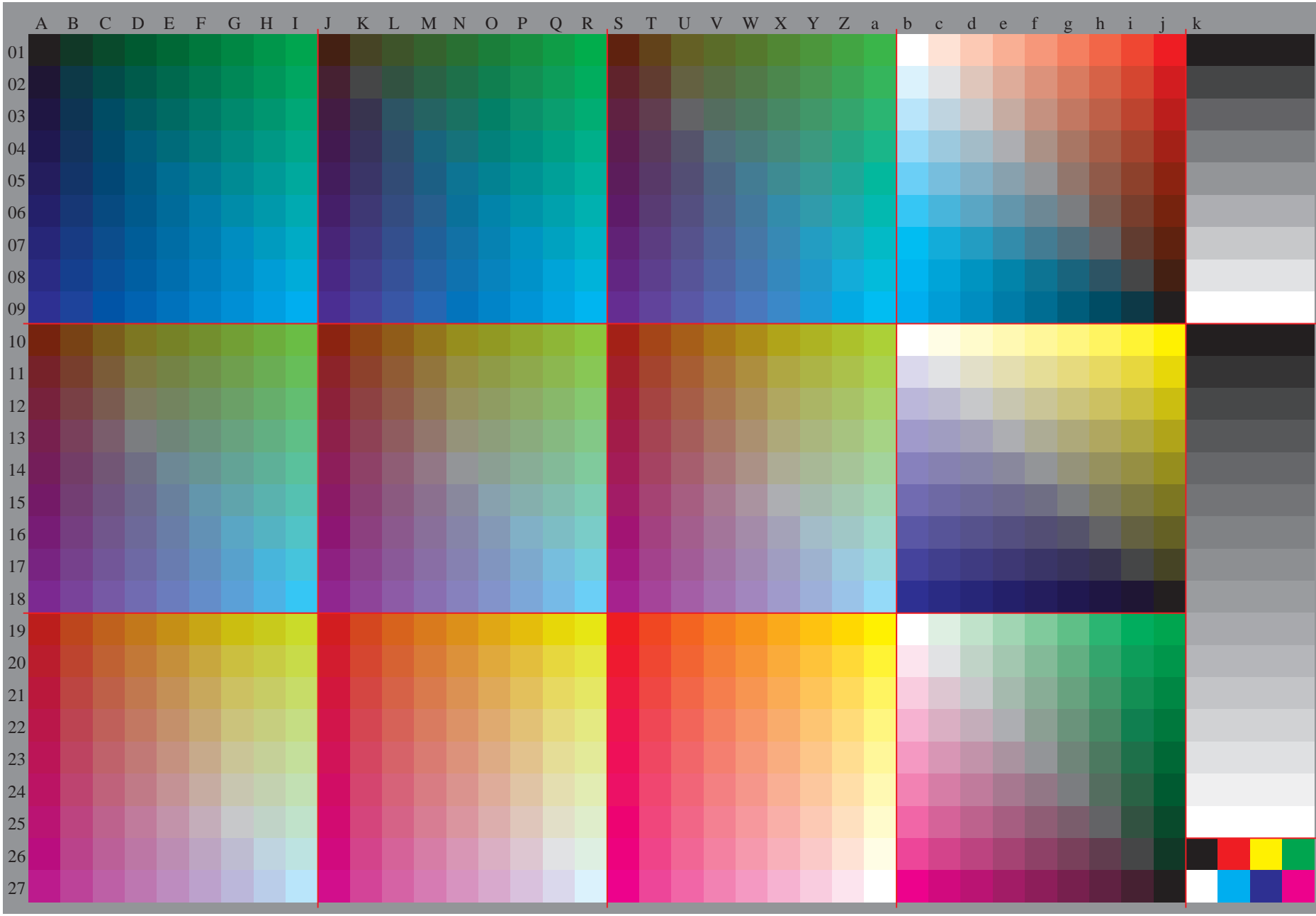


Siehe ähnliche Dateien: <http://www.ps.bam.de/Gg07/>; www.ps.bam.de/Gg07/HTM
Technische Information: <http://www.ps.bam.de> Version 2.1, io=1,1, ColSpX=1

BAM-Registrierung: 20081201-Gg07/10L/L07g00NA.TXT/ .PS BAM-Material: Code=rh4ta
Anwendung für Beurteilung und Messung von Drucker- oder Monitorsystemen



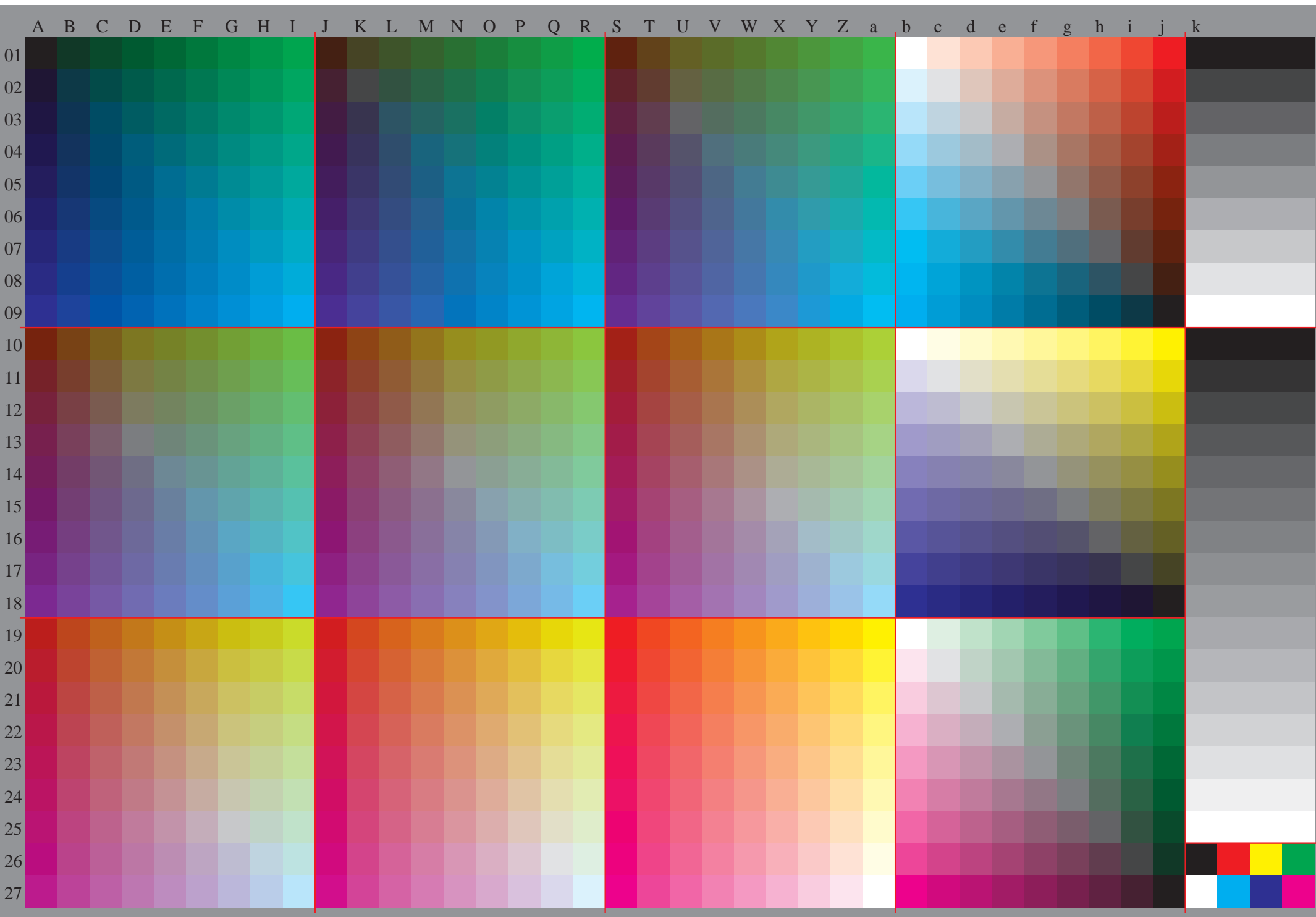


Table with columns labeled A through lab*icu* and rows numbered 01 through 27. The table contains numerical data, likely representing a grid of values for a specific application or experiment.

%LAB*a,CIE O:46.9 66.2 40.3 Y:88.7 -9.6 88.2 L:54.2 -65.3 33.9 C:61.4 -30.5 -42.0 V:25.9 26.0 -47.4 M:47.9 73.5 -9.0 N:20.4 0.0 0.0 W:94.6 0.0 0.0

Table with columns for color data: %LAB*a,CIE, O, Y, L, C, V, M, N, W. The table contains 50 rows of numerical values for each parameter, organized into columns. The values represent color coordinates and their deviations.

%XYZa,CIE O:29.2 15.9 4.3 Y:65.4 73.4 10.7 L:10.2 22.2 9.0 C:21.2 29.7 73.6 V:6.7 4.7 23.3 M:32.3 16.7 23.1 N:2.9 3.1 3.4 W:82.5 86.8 94.5

% cmy0'*_8bit, 9x9x9 grid

Table with 10 columns and 100 rows of numerical data, representing a 9x9x9 grid. Each row contains 10 values, likely representing color channels or grid coordinates.

