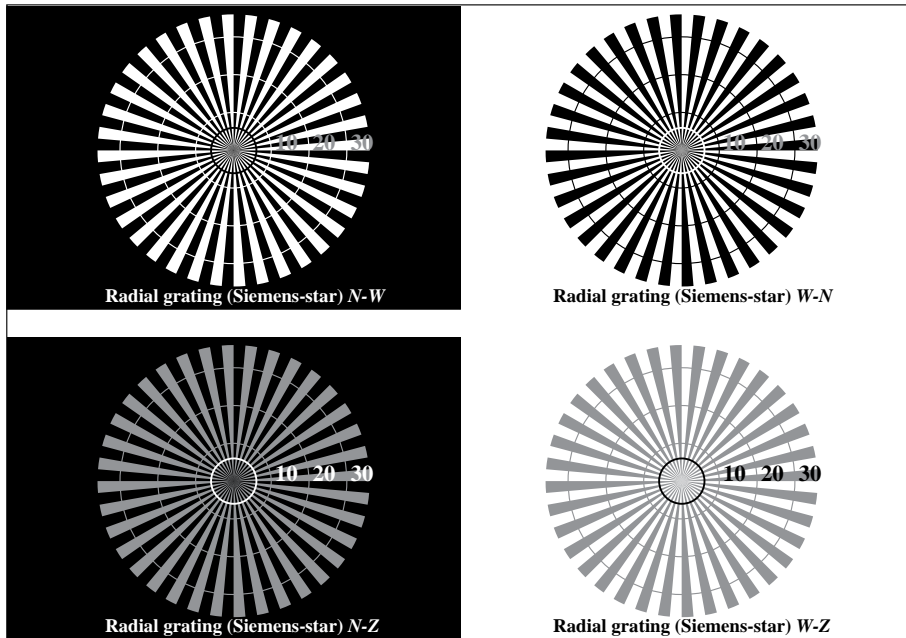


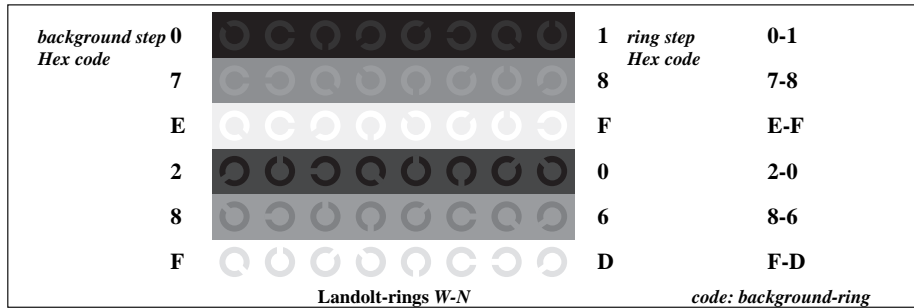
See for similar files: <http://www.ps.bam.de/IE86/>
 Information and Order: <http://www.ps.bam.de>

Version 2.0, io=0,0?

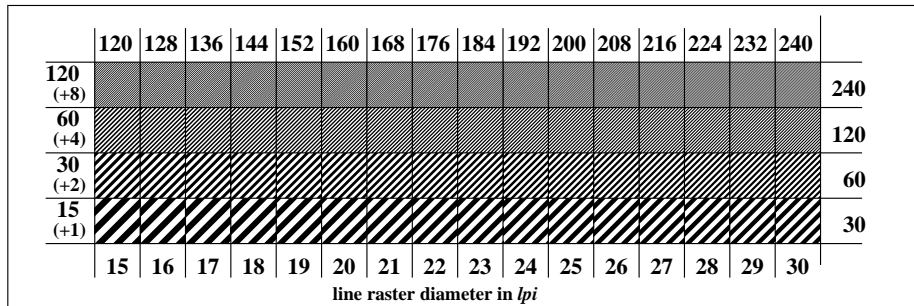
BAM registration: 20031201-IE86/10B/B86E01SP.PDF
 Full page: application for monitors (Yr=2.5) and printers
 BAM material: code=tha4ta



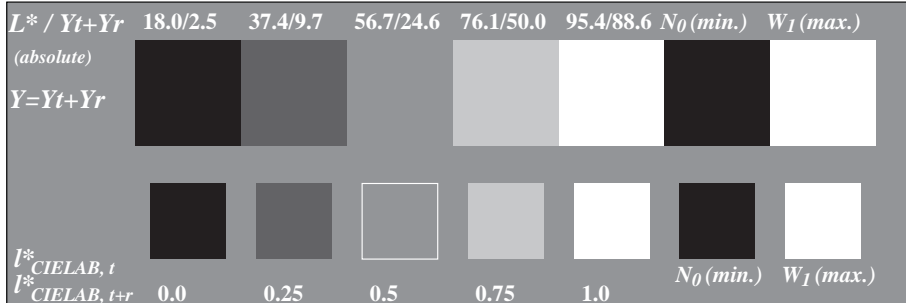
Picture C1: Radial gratings (Siemens-stars) N-W, W-N, N-Z and W-Z; PS oper.: 000n*lin 1.0 exp setcmykcolor



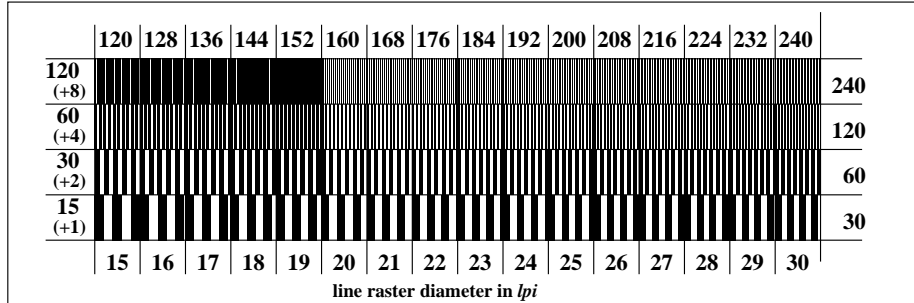
Picture C4: Landolt-rings W-N; PS operator: 000n*lin 1.0 exp setcmykcolor



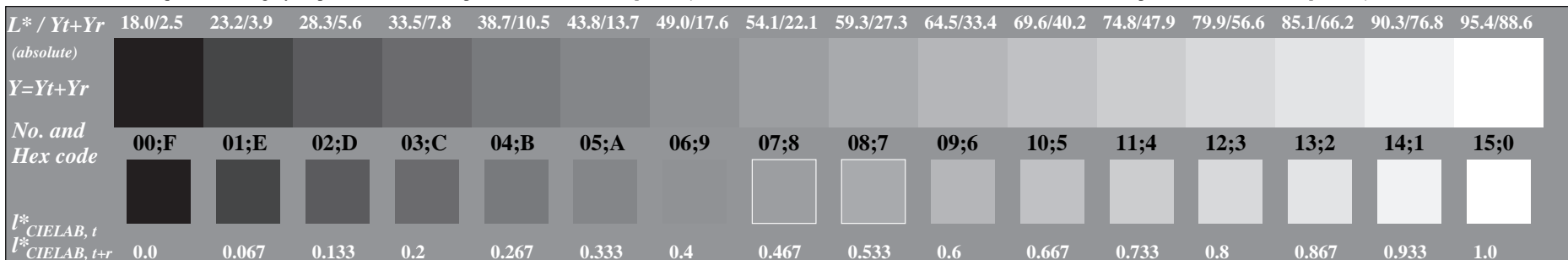
Picture C5: Line raster under 45° (or 135°); PS operator: 000n*lin 1.0 exp setcmykcolor



Picture C2: 5 visual equidistant L*-grey steps + N0 + W1; PS operator: 000n*lin 1.0 exp setcmykcolor



Picture C6: Line raster under 90° (or 0°); PS operator: 000n*lin 1.0 exp setcmykcolor



Picture C3: 16 visual equidistant L*-grey steps; PS operator: 000n*lin 1.0 exp setcmykcolor

