

See for similar files: <http://www.ps.bam.de/IE86/>
 Information and Order: <http://www.ps.bam.de>

Version 2.0, io=0-0, IIRS, oLRS, ClEXYZ

Full page: application for monitors, Y=5,0,XYZ

BAM registration: 20031201-IE86/C86E00F1.PS/.TXT
 BAM material: code=thata

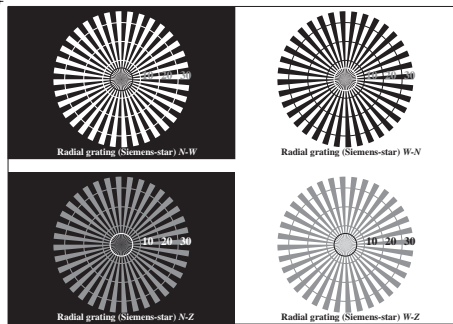


Figure C1: Radial gratings (Siemens-stars) N-W, W-N, N-Z and W-Z; PS oper.: 000n*lin 1.0 exp setcmykcolor

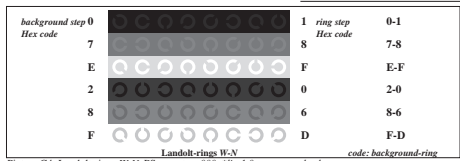


Figure C4: Landolt-rings W-N; PS operator: 000n*lin 1.0 exp setcmykcolor

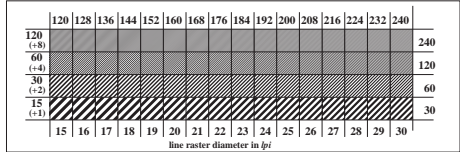


Figure C5: Line raster under 45° (or 135°); PS operator: 000n*lin 1.0 exp setcmykcolor

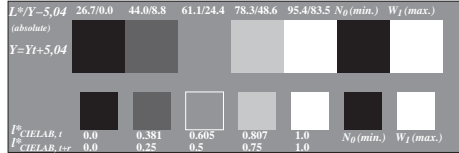


Figure C2: 5 visual equidistant L^* -grey steps + N_0 + W_1 ; PS operator: 000n*lin 1.0 exp setcmykcolor

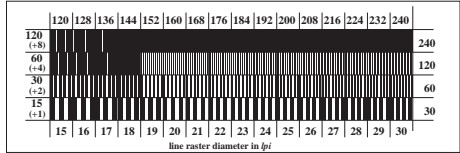


Figure C6: Line raster under 90° (or 0°); PS operator: 000n*lin 1.0 exp setcmykcolor

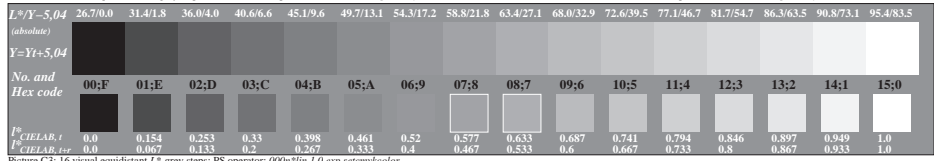


Figure C3: 16 visual equidistant L^* -grey steps; PS operator: 000n*lin 1.0 exp setcmykcolor

ISO/IEC-test chart no. 3C according to ISO/IEC 15775 and DIS ISO/IEC 19839-X; input: 000n*lin 1.0 exp setcmykcolor
 output: cmy0* / 000n* setcmykcolor