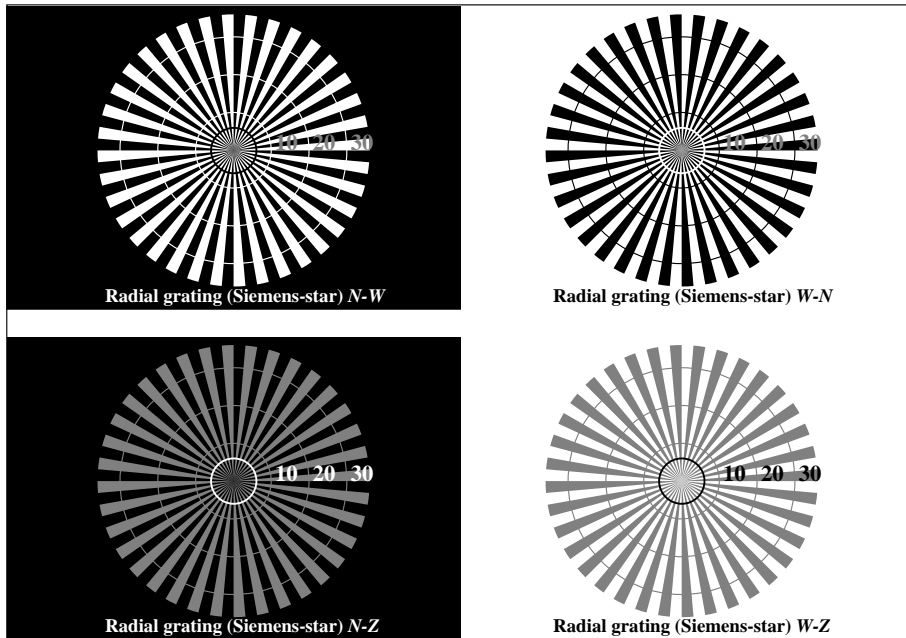


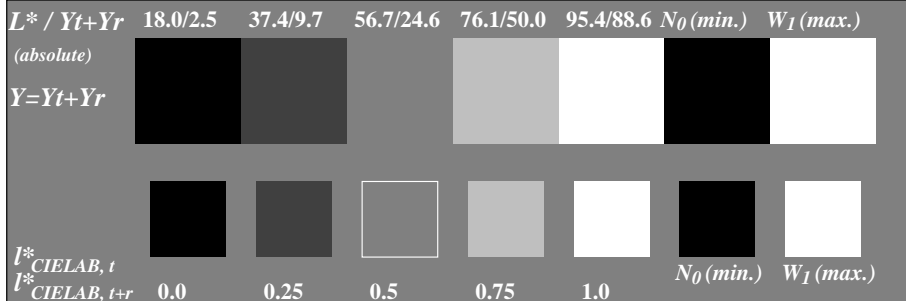
See for similar files: <http://www.ps.bam.de/IE87/>
 Information and Order: <http://www.ps.bam.de>

Version 2.0, io=1,1?

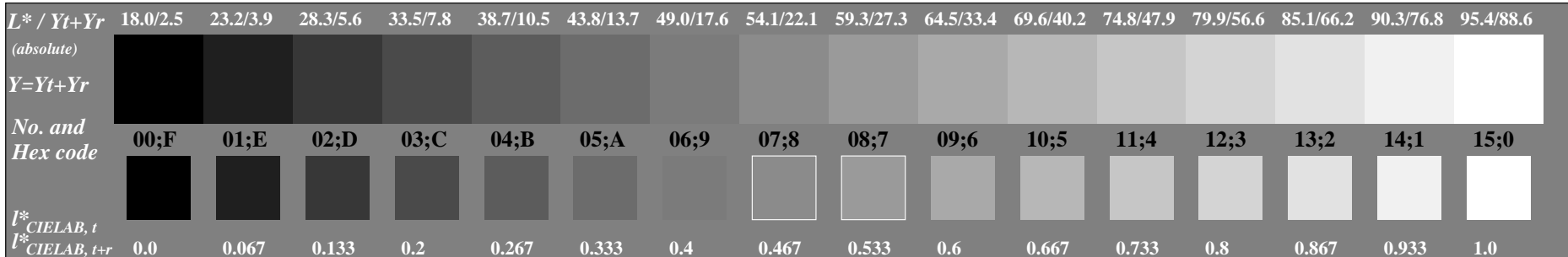
BAM registration: 20031201-IE87/10C/C87E10SP.PS/.PDF
 Full page: application for monitors (Yr=2.5) and printers
 BAM material: code=tha4ta



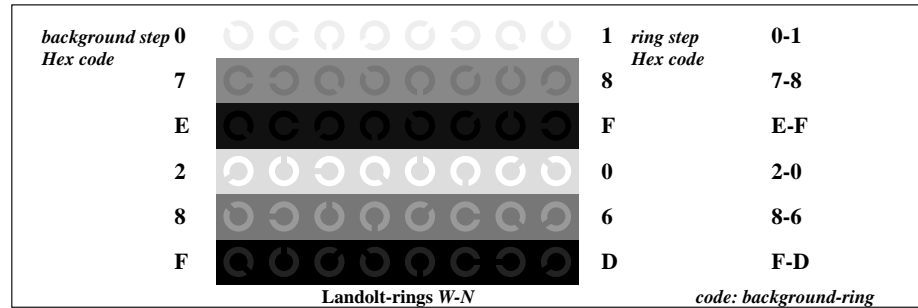
Picture C1: Radial gratings (Siemens-stars) N-W, W-N, N-Z and W-Z; PS oper.: *w*lin 1.0 exp setgray*



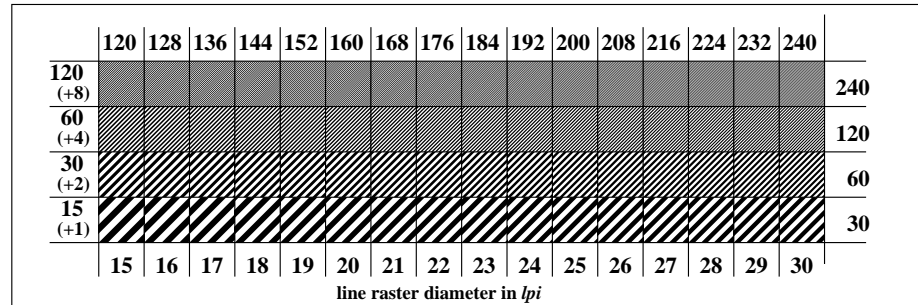
Picture C2: 5 visual equidistant L^* -grey steps + N_0 + W_I ; PS operator: *w*lin 1.0 exp setgray*



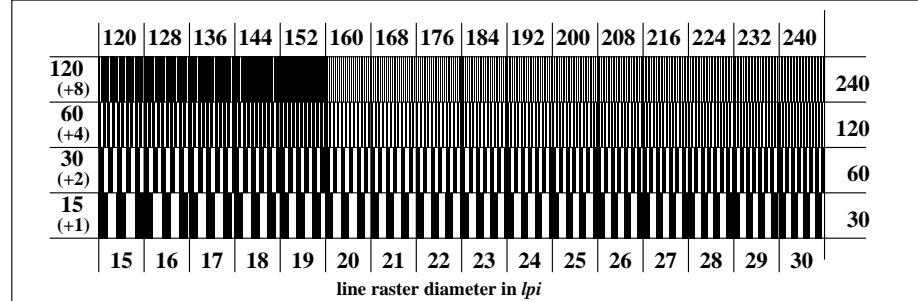
Picture C3: 16 visual equidistant L^* -grey steps; PS operator: *w*lin 1.0 exp setgray*



Picture C4: Landolt-rings W-N; PS operator: *w*lin 1.0 exp setgray*



Picture C5: Line raster under 45° (or 135°); PS operator: *w*lin 1.0 exp setgray*



Picture C6: Line raster under 90° (or 0°); PS operator: *w*lin 1.0 exp setgray*