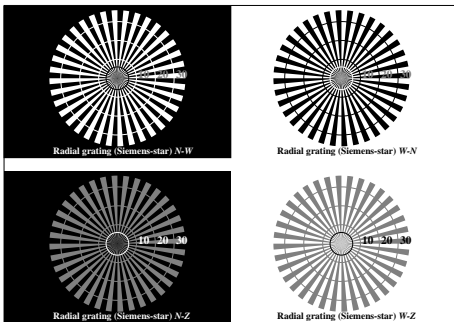
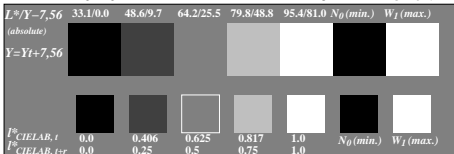


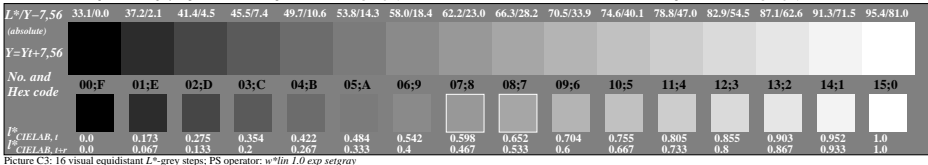
See for similar files: <http://www.ps.bam.de/IE87/>
 Information and Order: <http://www.ps.bam.de/>
 Version 2.0, io=1,1



Picture C1: Radial gratings (Siemens-stars) N-W, W-N, N-Z and W-Z; PS oper.: $w^*lin\ 1.0\ exp\ setgray$

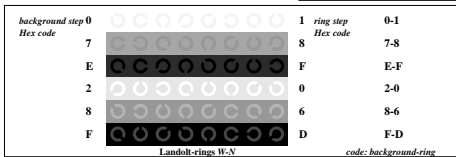


Picture C2: 5 visual equidistant L^* -grey steps + N_0 + W_1 ; PS operator: $w^*lin\ 1.0\ exp\ setgray$

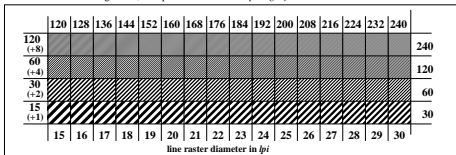


Picture C3: 16 visual equidistant L^* -grey steps; PS operator: $w^*lin\ 1.0\ exp\ setgray$

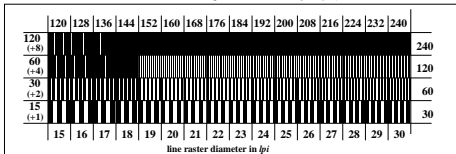
ISO/IEC-test chart no. 3D according to ISO/IEC 15775 and DIS ISO/IEC 19839-X; input: $w^*lin\ 1.0\ exp\ setgray$
 output: $w^*lin\ 1.0\ exp\ setgray$



Picture C4: Landolt-rings W-N; PS operator: $w^*lin\ 1.0\ exp\ setgray$



Picture C5: Line raster under 45° (or 135°); PS operator: $w^*lin\ 1.0\ exp\ setgray$



Picture C6: Line raster under 90° (or 0°); PS operator: $w^*lin\ 1.0\ exp\ setgray$

BAM registration: 20031201-IE87/D87E00N1.PS/.TXT
 Full page: application for monitors, Y=7,5,XYZ

BAM material: code=theta4