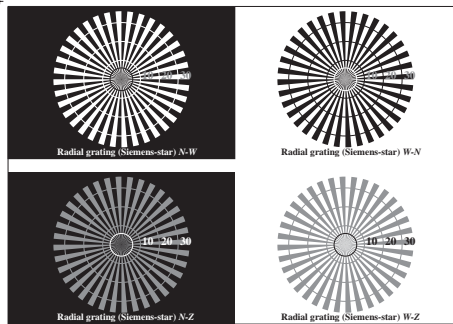
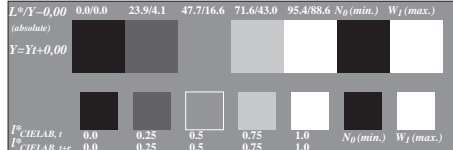


See for similar files: <http://www.ps.bam.de/IE88/>
 Information and Order: <http://www.ps.bam.de/>

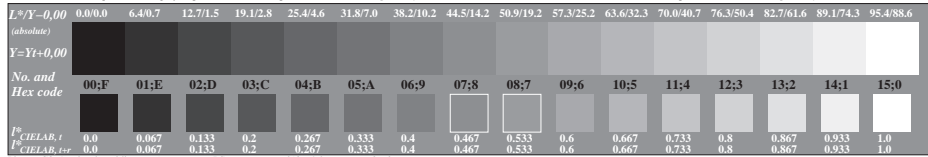
Version 2.0, io=2, IIRS, oLRS, ClEXYZ



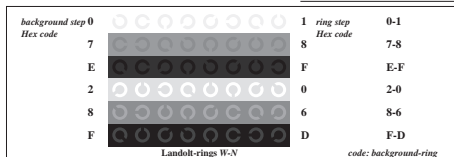
Picture C1: Radial gratings (Siemens-stars) N-W, W-N, N-Z and W-Z; PS oper.: $nnn0^*lin\ 1.0\ exp\ setcmykcolor$



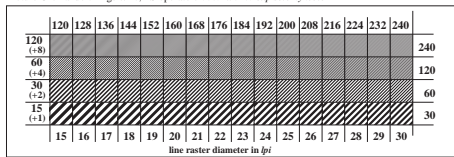
Picture C2: 5 visual equidistant L^* -grey steps + N_0 + W_1 ; PS operator: $nnn0^*lin\ 1.0\ exp\ setcmykcolor$



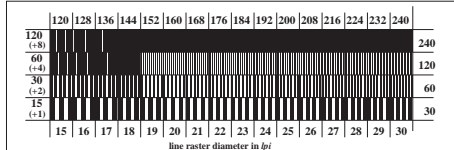
Picture C3: 16 visual equidistant L^* -grey steps; PS operator: $nnn0^*lin\ 1.0\ exp\ setcmykcolor$



Picture C4: Landolt-rings W-N; PS operator: $nnn0^*lin\ 1.0\ exp\ setcmykcolor$



Picture C5: Line raster under 45° (or 135°); PS operator: $nnn0^*lin\ 1.0\ exp\ setcmykcolor$



Picture C6: Line raster under 90° (or 0°); PS operator: $nnn0^*lin\ 1.0\ exp\ setcmykcolor$

ISO/IEC-test chart no. 3A according to ISO/IEC 15775 and DIS ISO/IEC 19839-X; input: $nnn0^*lin\ 1.0\ exp\ setcmykcolor$ output: $cmy0^*/000n^*\ setcmykcolor$

BAM registration: 20031201-IE88/A88E00F1.PS/TXT
 Full page: application for monitors, Y=0.0, X=YZ

BAM material: code=thata