

See for similar files: <http://www.ps.bam.de/IE88/>  
 Information and Order: <http://www.ps.bam.de>

Version 2.0, io=2, IIRS, oLRS, ClEXYZ

BAM registration: 20031201-IE88/D88E00F1.PS/.TXT  
 Full page: application for monitors, Y=7,5,XYZ

BAM material: code=thata

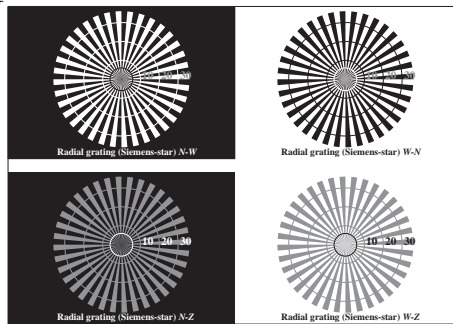


Figure C1: Radial gratings (Siemens-stars) N-W, W-N, N-Z and W-Z; PS oper.:  $nnn0^*lin\ 1.0\ exp\ setcmykcolor$

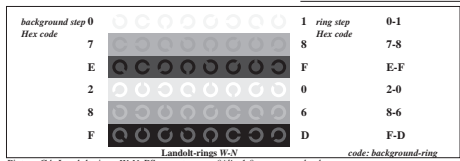


Figure C4: Landolt-rings W-N; PS operator:  $nnn0^*lin\ 1.0\ exp\ setcmykcolor$

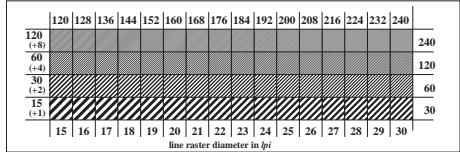


Figure C5: Line raster under 45° (or 135°); PS operator:  $nnn0^*lin\ 1.0\ exp\ setcmykcolor$

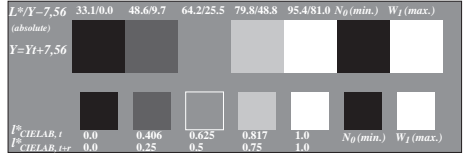


Figure C2: 5 visual equidistant  $L^*$ -grey steps +  $N_0$  +  $W_1$ ; PS operator:  $nnn0^*lin\ 1.0\ exp\ setcmykcolor$

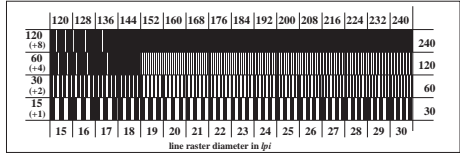


Figure C6: Line raster under 90° (or 0°); PS operator:  $nnn0^*lin\ 1.0\ exp\ setcmykcolor$

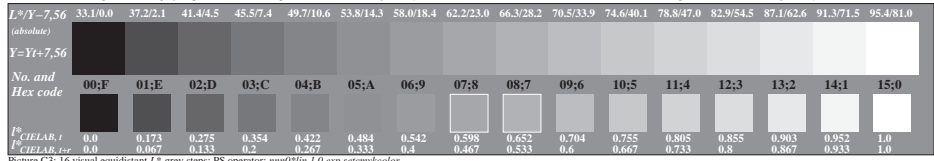


Figure C3: 16 visual equidistant  $L^*$ -grey steps; PS operator:  $nnn0^*lin\ 1.0\ exp\ setcmykcolor$

ISO/IEC-test chart no. 3D according to ISO/IEC 15775 and DIS ISO/IEC 19839-X; input:  $nnn0^*lin\ 1.0\ exp\ setcmykcolor$  output:  $cmy0^*/000n^*\ setcmykcolor$

