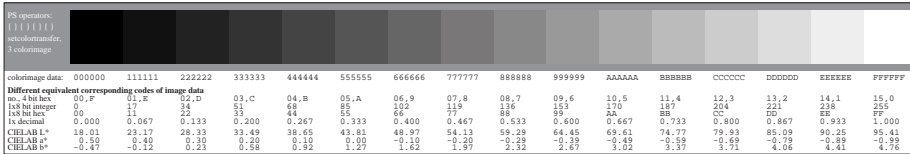
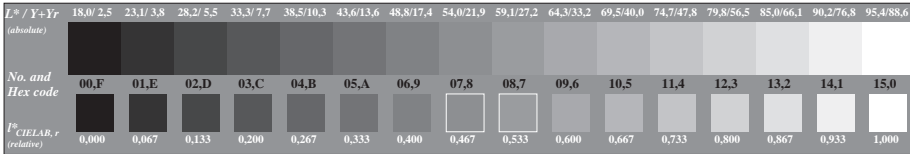


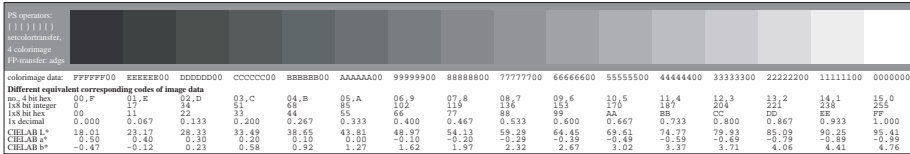
Picture C3: 16 visual equidistant L^* -grey steps; Use of the PS operator `www* setrgbcolor`



B10-3N Transfer of hexadecimal image data for 16 grey steps; hex data in `www*` image file and linear digital spacing;



Picture C3: 16 visual equidistant L^* -grey steps; Use of the PS operator `nnn0* setcmkcolor`



B10-3N Transfer of hexadecimal image data for 16 grey steps; hex data in `nnn0*` image file and linear spacing; special inverse `cmY*`-`olV*` transfer of `nnn0*` image data

Picture C3 of ISO/IEC-test chart 3; ISO/IEC 15775 and input: mixture (m) of PS operators
 similar `olV*` and `cmY0*` colorimage DIS ISO/IEC 19839-X; output: `cmY0*/000n* setcmkcolor`