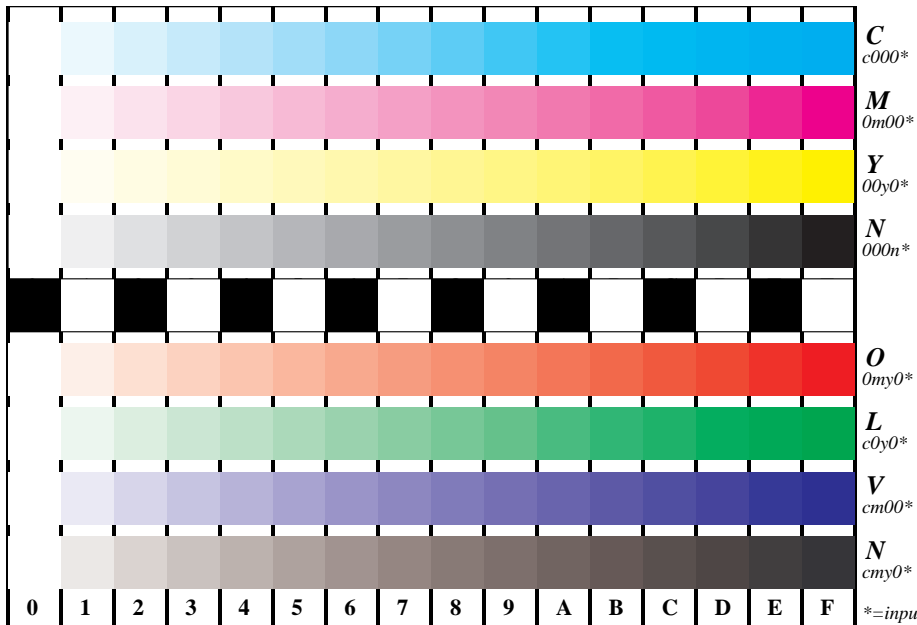


See for similar files: <http://www.ps.bam.de/IE95/IE95.HTM>  
 Information and Order: <http://www.ps.bam.de> Version 2.0, io=0.0

BAM registration: 20030101-IE95/B95E00N1.PS/.TXT  
 application for monitors

BAM material: code=thata



Picture B4 and D4: 16 equidistant steps *B4*: W-C, W-M, W-Y and W-N; *D4*: W-O, W-L, W-V and W-N(CMY); Use of PS operator; B4:  $\text{cmy0}^* / 1000^*$  setcmykcolor; D4:  $\text{cmy0}^*$  setcmykcolor (only)

Fig. B4/D4 of ISO/IEC-test chart 2/4;

ISO/IEC 15775 and  
 TR ISO/IEC 24705;

input:  $\text{cmyn}^*$  setcmykcolor  
 output: no change compared to input

