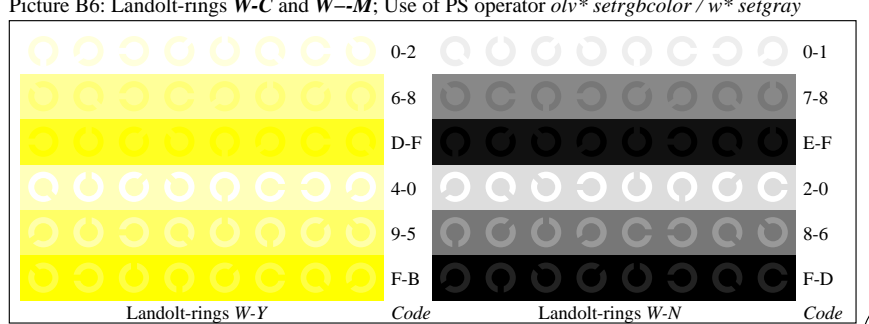
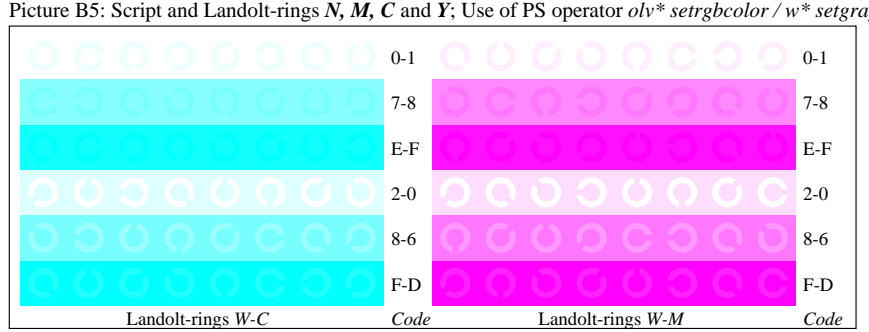
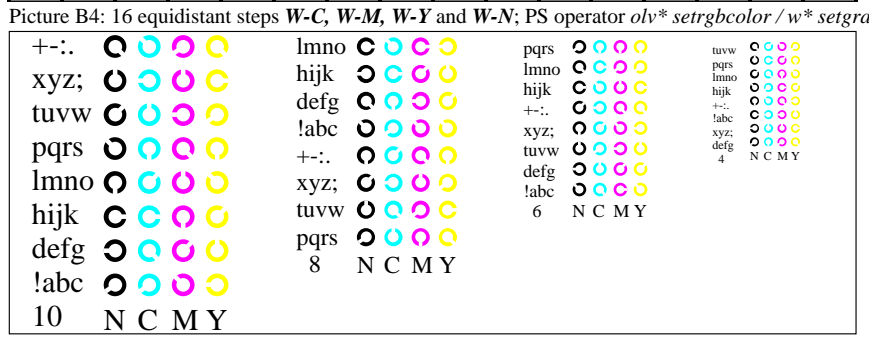
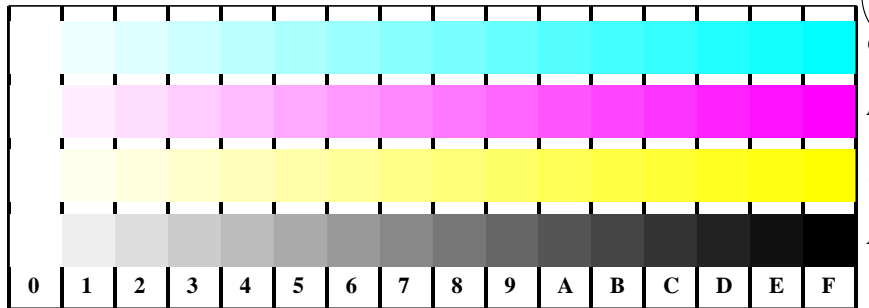


Picture B1: Flower motif, 14 CIE-test colours and 2 + 16 grey steps (sf); PS operators *settransfer*, 3 *colorimage*
 Picture B2: Radial gratings W-C, W-L, W-Y, W-N, and W-Z; PS operator *olv* setrgbcolor / w* setgray*
 Picture B3: 14 CIE-test colours and 2 + 16 grey steps; Use of PS operator *olv* setrgbcolor / w* setgray*



Picture B4: 16 equidistant steps W-C, W-M, W-Y and W-N; PS operator *olv* setrgbcolor / w* setgray*
 Picture B5: Script and Landolt-rings N, M, C and Y; Use of PS operator *olv* setrgbcolor / w* setgray*
 Picture B6: Landolt-rings W-C and W-M; Use of PS operator *olv* setrgbcolor / w* setgray*
 Picture B7: Landolt-rings W-Y and W-N; Use of PS operator *olv* setrgbcolor / w* setgray*

See for similar files: <http://www.ps.bam.de/IE97/>
 Information and Order: <http://www.ps.bam.de>
 Version 2.0, io=1,1

BAM registration: 20030101-IE97/10B/B97E00NP.PS/.PDF
 application for monitors
 BAM material: code=th4ta