

image pixel: 192 x 128

384 x 256

768 x 512

1536 x 1024

3072 x 2048

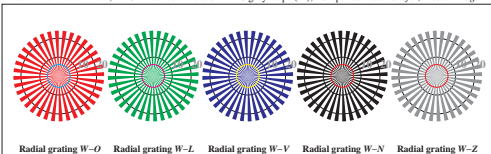
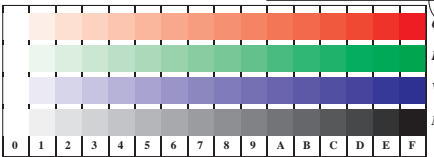
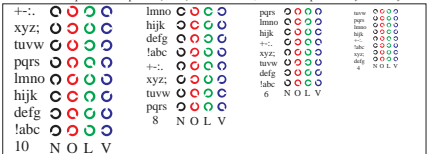
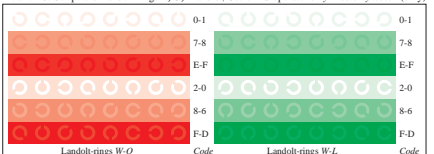
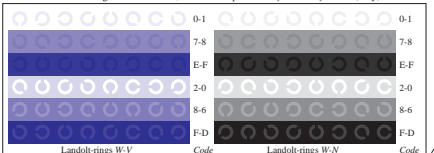
Picture D1: Flower motif, 14 CIE-test colours and 2 + 16 grey steps (nf); PS operators *settransfer*, *4 colorimage*Picture D2: Radial gratings *W-O*, *W-L*, *W-V*, *W-N*, and *W-Z*; PS operator *cmy0\* setcmycolor* (only)Picture D3: 14 CIE-test colours and 2 + 16 grey steps; Use of PS operator *cmy0\* setcmycolor* (only)

Fig. D1 to D7 of ISO/IEC-test chart 4;

ISO/IEC 15775 and

DIS ISO/IEC 19839-X;

input: *cmy0\* setcmycolor* (only)output: *cmy0\*/000n\* setcmycolor*Picture D4: 16 equidistant steps *W-O*, *W-L*, *W-V* and *W-N*; Use of PS operator *cmy0\* setcmycolor* (only)Picture D5: Script and Landolt-rings *N*, *O*, *L* and *V*; Use of PS operator *cmy0\* setcmycolor* (only)Picture D6: Landolt-rings *W-O* and *W-L*; Use of PS operator *cmy0\* setcmycolor* (only)Picture D7: Landolt-rings *W-V* and *W-N*; Use of PS operator *cmy0\* setcmycolor* (only)