

image pixel: 192 x 128

384 x 256

768 x 512

1536 x 1024

3072 x 2048

Picture D1: Flower motif, 14 CIE-test colours and 2 + 16 grey steps (nf); PS operators *settransfer*, *3_colorimage*

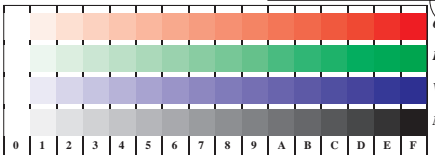
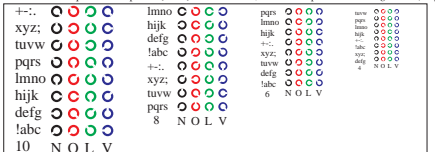
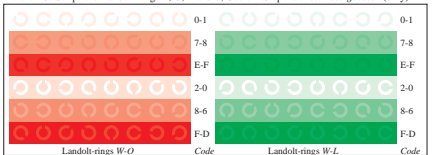
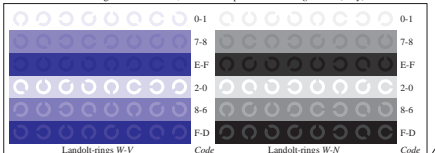
Radial grating W-O Radial grating W-L Radial grating W-V Radial grating W-N Radial grating W-Z

Picture D2: Radial gratings W-O, W-L, W-V, W-N, and W-Z; PS operator *olv*setgrbcolor* (only)Picture D3: 14 CIE-test colours and 2 + 16 grey steps; Use of PS operator *olv*setgrbcolor* (only)

Fig. D1 to D7 of ISO/IEC-test chart 4;

ISO/IEC 15775 and

DIS ISO/IEC 19839-X;

input: *olv*setgrbcolor* (only)output: *cmv0*/000n*setcmvcolor*Picture D4: 16 equidistant steps W-O, W-L, W-V and W-N; Use of PS operator *olv*setgrbcolor* (only)Picture D5: Script and Landolt-rings N, O, L and V; Use of PS operator *olv*setgrbcolor* (only)Picture D6: Landolt-rings W-O and W-L; Use of PS operator *olv*setgrbcolor* (only)Picture D7: Landolt-rings W-V and W-N; Use of PS operator *olv*setgrbcolor* (only)