

Siehe ähnliche Dateien: <http://www.ps.bam.de/IG87/>  
 Information, Bestellung: <http://www.ps.bam.de> Version 2.0, io=1,7; iLRS; oLRS, CIEXYZ

BAM-Registrierung: 20031201-IG87/10B/B87G07FP.PS/.PDF BAM-Material: Code=th41ta  
 Ganze Seite: Anwendung für Monitore, Yr=2.5, XYZ

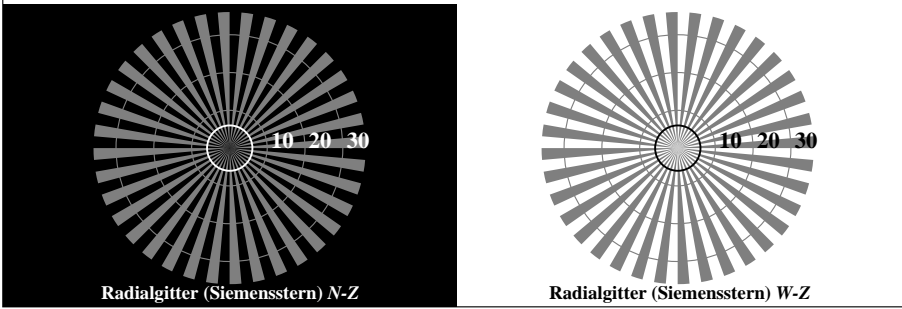
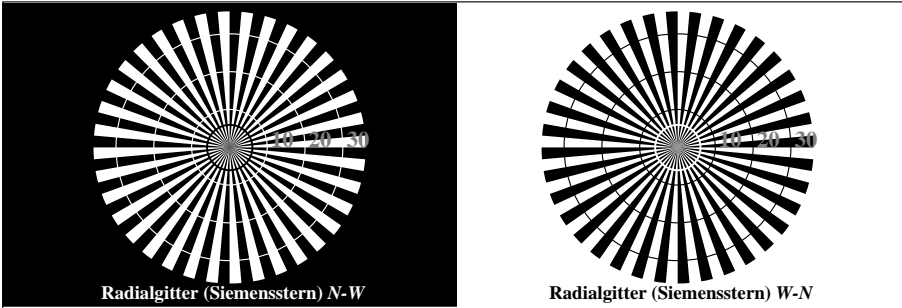


Bild C1: Radialgitter (Siemenssterne) N-W, W-N, N-Z und W-Z; PS-Operator: `w*lin 1.0 exp setgray`

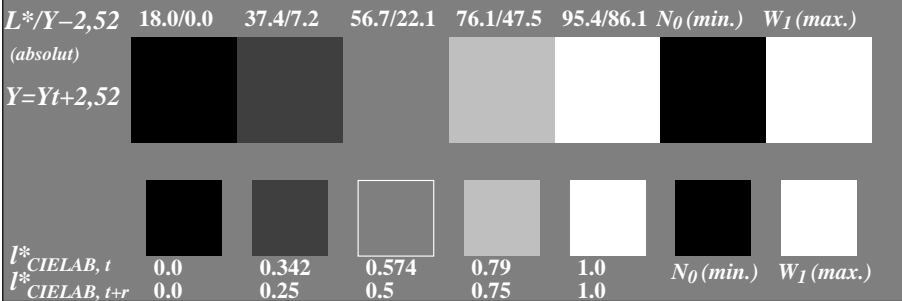


Bild C2: 5 visuell gleichabständige  $L^*$ -Graustufen +  $N_0$  +  $W_I$ ; PS-Operator: `w*lin 1.0 exp setgray`

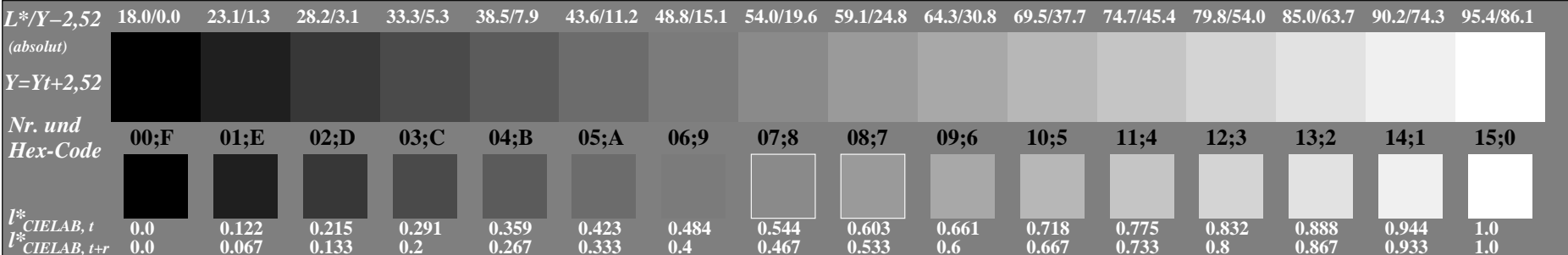


Bild C3: 16 visuell gleichabständige  $L^*$ -Graustufen; PS-Operator: `w*lin 1.0 exp setgray`

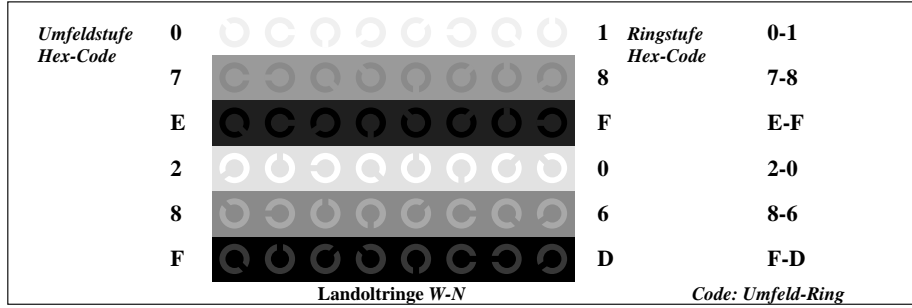


Bild C4: Landoltringe W-N; PS-Operator: `w*lin 1.0 exp setgray`

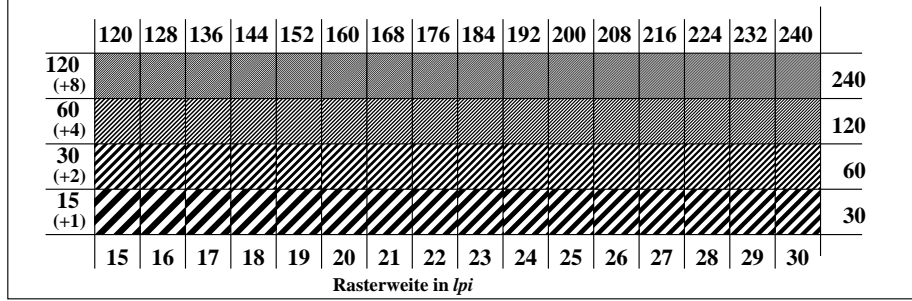


Bild C5: Linienraster unter 45° (oder 135°); PS-Operator: `w*lin 1.0 exp setgray`

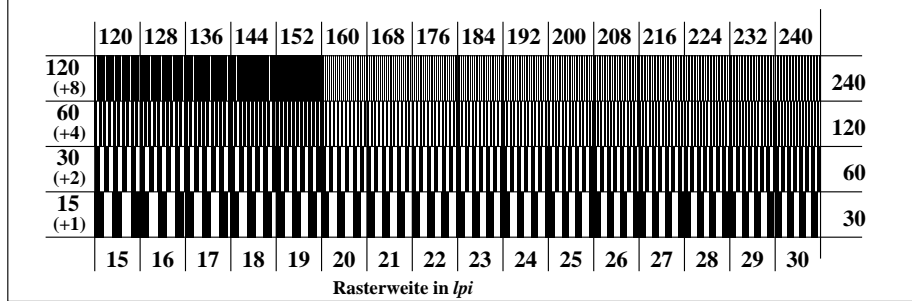


Bild C6: Linienraster unter 90° (oder 0°); PS-Operator: `w*lin 1.0 exp setgray`

