

Bildpixel: 192 x 128
 384 x 256
 768 x 512
 1536 x 1024
 3072 x 2048



Bild D1: Blumenmotiv, 14 CIE-Prüffarben sowie 2 + 16 Graustufen (nf); PS-Operatoren *settransfer*, *3 colorimage*

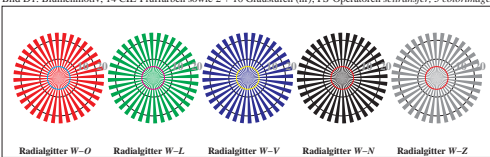


Bild D2: Radialgitter W-O, W-L, W-V, W-N und W-Z; PS-Operator *olv* setrgcolor* (only)

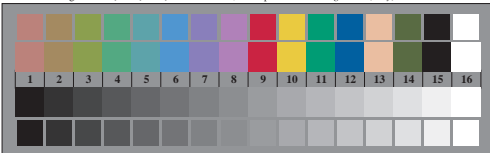


Bild D3: 14 CIE-Prüffarben sowie 2 + 16 Graustufen; PS-Operator *olv* setrgcolor* (only)

Fig. D1 bis D7; ISO/IEC-Prüfvorlage 4; ISO/IEC 15775 und DIS ISO/IEC 19839-X; input: *olv* setrgcolor* (only) output: *cmj0*/000n* setcmjcolor*

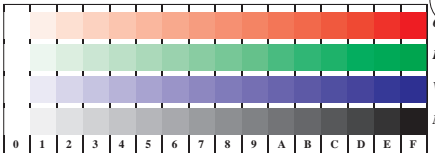


Bild D4: 16 gleichabständige Stufen W-O, W-L, W-V und W-N; PS-Operator *olv* setrgcolor* (only)

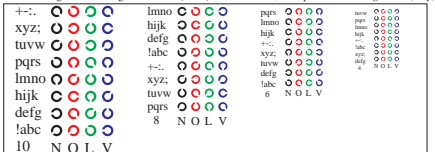


Bild D5: Schrift und Landolringe N, O, L und V; PS-Operator *olv* setrgcolor* (only)

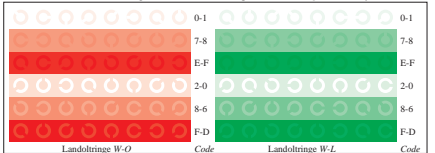


Bild D6: Landolringe W-O und W-L; PS-Operator *olv* setrgcolor* (only)

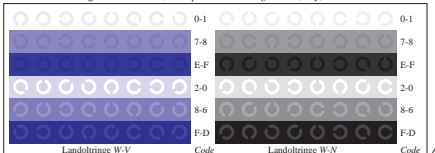


Bild D7: Landolringe W-V und W-N; PS-Operator *olv* setrgcolor* (only)