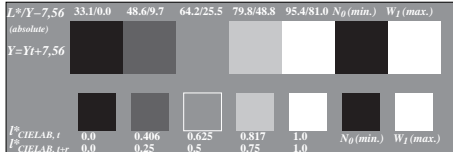
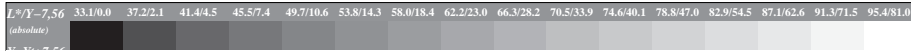


Picture C1: Radial gratings (Siemens-stars) N-W, W-N, N-Z and W-Z; PS oper.: 000n\*lin 1.0 exp setcmykcolor

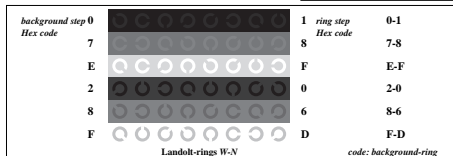


Picture C2: 5 visual equidistant  $L^*$ -grey steps +  $N_0$  +  $W_1$ ; PS operator: 000n\*lin 1.0 exp setcmykcolor

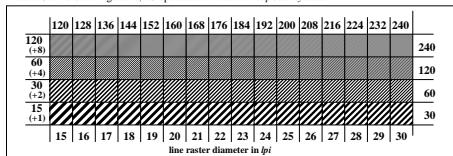


Picture C3: 16 visual equidistant  $L^*$ -grey steps; PS operator: 000n\*lin 1.0 exp setcmykcolor; use file [www.ps.bam.de/IE86/10D/D86E00N1.PS/](http://www.ps.bam.de/IE86/10D/D86E00N1.PS/) or [/D86E00NP.PS/](http://www.ps.bam.de/D86E00NP.PS/) PDF for DPS or PDF systems to complete the figure

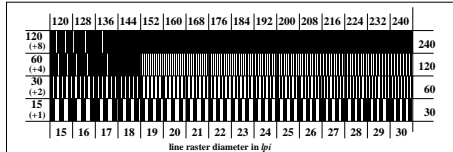
ISO/IEC-test chart no. 3D according to ISO/IEC 15775 and input: 000n\*lin 1.0 exp setcmykcolor  
 DIS ISO/IEC 19839-X; output: 000n\*lin 1.0 exp setcmykcolor



Picture C4: Landolt-rings W-N; PS operator: 000n\*lin 1.0 exp setcmykcolor



Picture C5: Line raster under 45° (or 135°); PS operator: 000n\*lin 1.0 exp setcmykcolor



Picture C6: Line raster under 90° (or 0°); PS operator: 000n\*lin 1.0 exp setcmykcolor