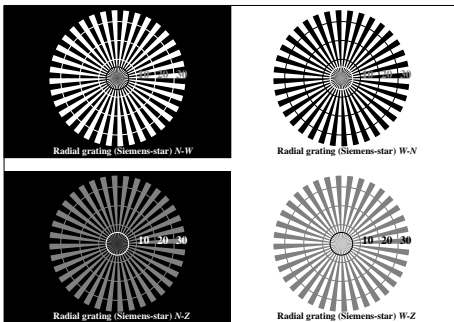
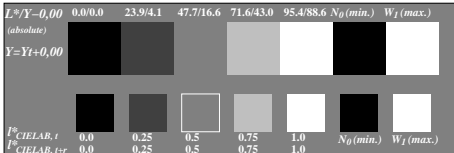


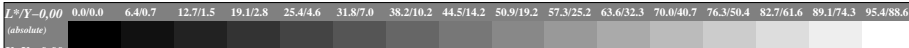
See for similar files: <http://www.ps.bam.de/JE87/>
 Information and Order: <http://www.ps.bam.de/>
 Version 2.0, io=1,1



Picture C1: Radial gratings (Siemens-stars) N-W, W-N, N-Z and W-Z; PS oper.: w*lin 1.0 exp setgray

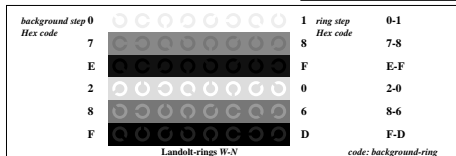


Picture C2: 5 visual equidistant L^* -gray steps + N_0 + W_1 ; PS operator: w*lin 1.0 exp setgray

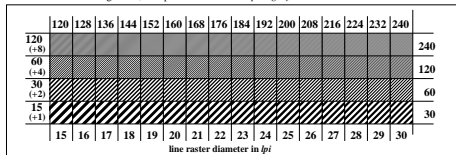


Picture C3: 16 visual equidistant L^* -gray steps; PS operator: w*lin 1.0 exp setgray; use file www.bam.de/KE87/10A/A87E00NA.PS or [/A87E00NP.PS](http://www.bam.de/KE87/10A/A87E00NP.PS) for DPS or PDF systems to complete the figure

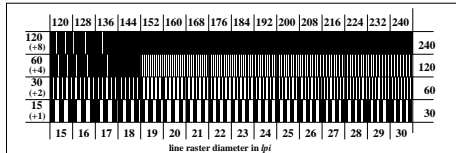
ISO/IEC-test chart no. 3A according to ISO/IEC 15775 and input: w*lin 1.0 exp setgray
 DIS ISO/IEC 19839-X; output: w*lin 1.0 exp setgray



Picture C4: Landolt-rings W-N; PS operator: w*lin 1.0 exp setgray



Picture C5: Line raster under 45° (or 135°); PS operator: w*lin 1.0 exp setgray



Picture C6: Line raster under 90° (or 0°); PS operator: w*lin 1.0 exp setgray

BAM registration: 20031201-JE87/A87E00N1.PS/.TXT
 Top part of page: application for monitors, Yr=0.0, XYZ
 BAM material: code=thata