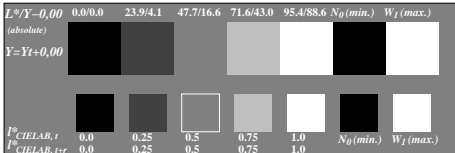
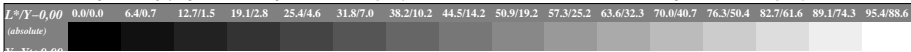


Picture C1: Radial gratings (Siemens-stars) N-W, W-N, N-Z and W-Z; PS oper.: [www*lin 1.0 exp setrgbcolor](http://www.lin 1.0 exp setrgbcolor)

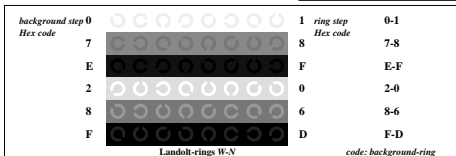


Picture C2: 5 visual equidistant L^* -grey steps + N_0 + W_1 ; PS operator: www*lin 1.0 exp setrgbcolor

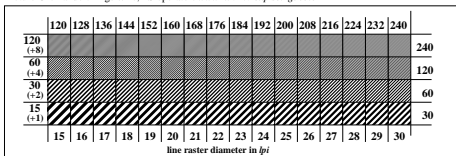


Picture C3: 16 visual equidistant L^* -grey steps; PS operator: www*lin 1.0 exp setrgbcolor; use file www.bam.de/KE89/10A/A89E00NA.PS or [/A89E00NP.PS](http://A89E00NP.PS)/PDF for DPS or PDF systems to complete the figure

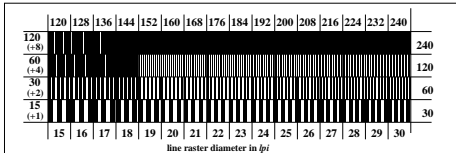
ISO/IEC-test chart no. 3A according to ISO/IEC 15775 and DIS ISO/IEC 19839-X; input: www*lin 1.0 exp setrgbcolor
 output: www*lin 1.0 exp setrgbcolor



Picture C4: Landolt-rings W-N; PS operator: www*lin 1.0 exp setrgbcolor



Picture C5: Line raster under 45° (or 135°); PS operator: www*lin 1.0 exp setrgbcolor



Picture C6: Line raster under 90° (or 0°); PS operator: www*lin 1.0 exp setrgbcolor