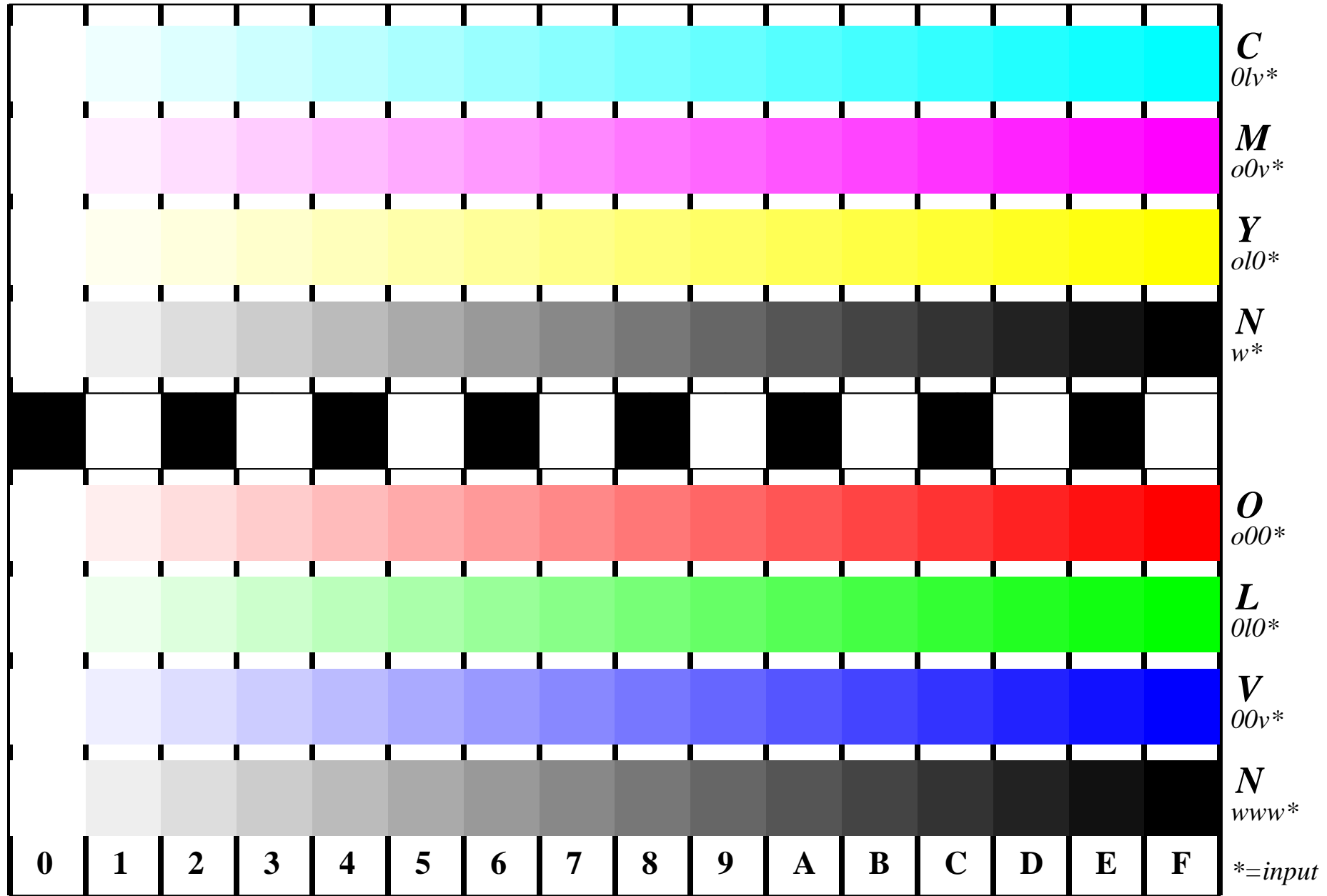




See for similar files: <http://www.ps.bam.de/IE95/IE95.HTM>  
 Information and Order: <http://www.ps.bam.de> Version 2.0, io=1,1?

BAM registration: 20030101-JE95/10A/A95E01SP.PS/.PDF BAM material: code=rha4ta  
 application for monitors (Yr=2.5) and printers



Picture B4 and D4: 16 equidistant steps **B4**: W-C, W-M, W-Y and W-N; **D4**: W-O, W-L, W-V and W-N(CMY); Use of PS operator; B4:  $ol_v^* setrgbcolor / w^* setgray$ ; D4:  $ol_v^* setrgbcolor$  (only)

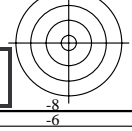


Fig. B4/D4 of ISO/IEC-test chart 2/4;

ISO/IEC 15775 and  
 TR ISO/IEC 24705;

input:  $ol_v^* setrgbcolor / w^* setgray$   
 output: Startup (S) data depend

