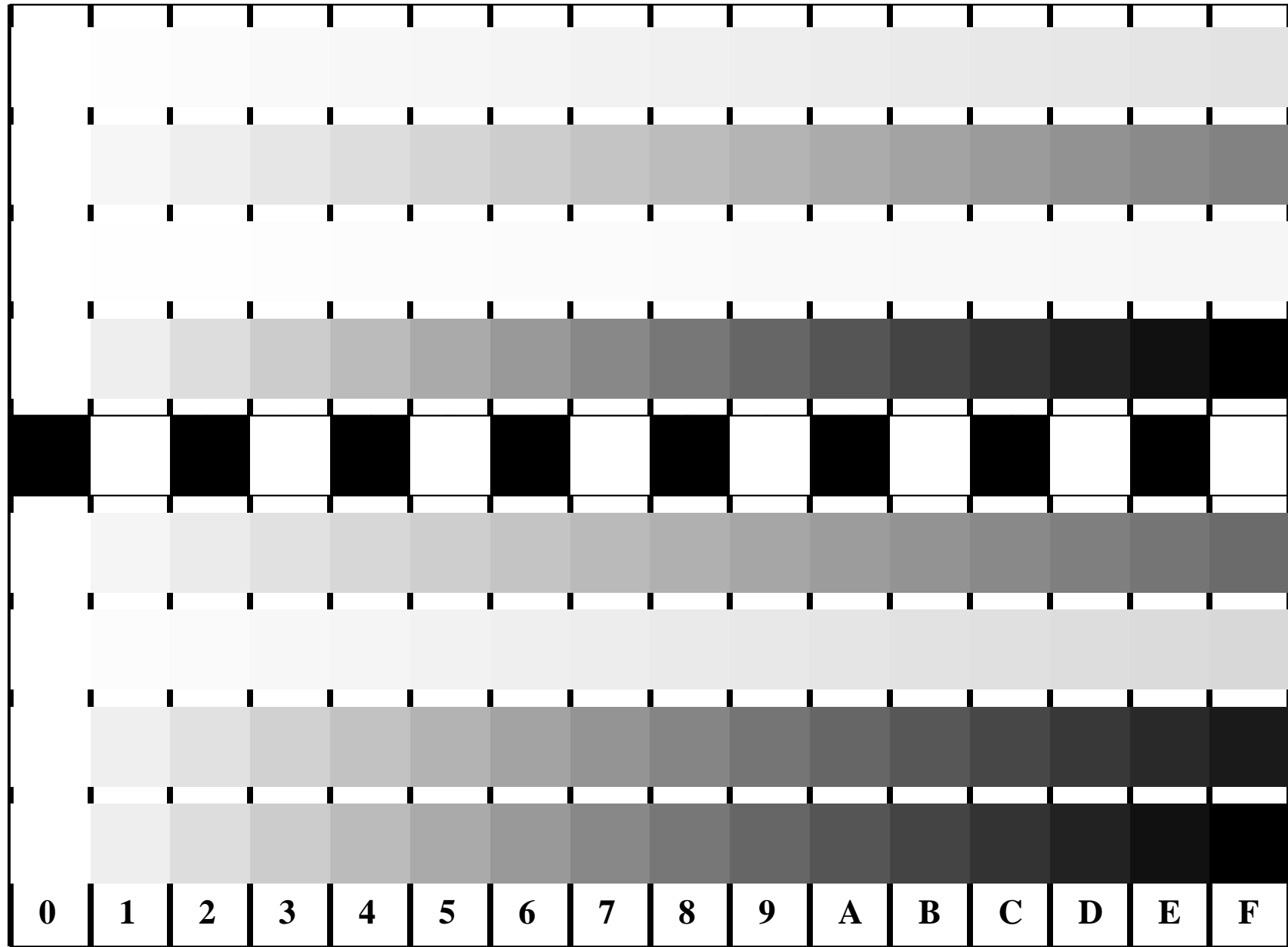


See for similar files: <http://www.ps.bam.de/IE95/10A/A95E07FP.PS/.PDF>
 Information and Order: <http://www.ps.bam.de> Version 2.0, io=1,7; iTRS; oOLS, CIEXYZ

BAM registration: 20030101-JE95/10A/A95E07FP.PS/.PDF BAM material: code=tha4ta
 application for monitors, Yr=0.0, XYZ



C *olv**
M *o0v**
Y *o10**
N *w**
O *o00**
L *o10**
V *oov**
N *www**
 *=input

Picture B4 and D4: 16 equidistant steps **B4**: W-C, W-M, W-Y and W-N; **D4**: W-O, W-L, W-V and W-N(CMY); Use of PS operator; B4: *olv* setrgbcolor / w* setgray*; D4: *olv* setrgbcolor* (only)

Fig. B4/D4 of ISO/IEC-test chart 2/4;

ISO/IEC 15775 and
 TR ISO/IEC 24705;

input: *olv* setrgbcolor / w* setgray*
 output: *w* setgray*

