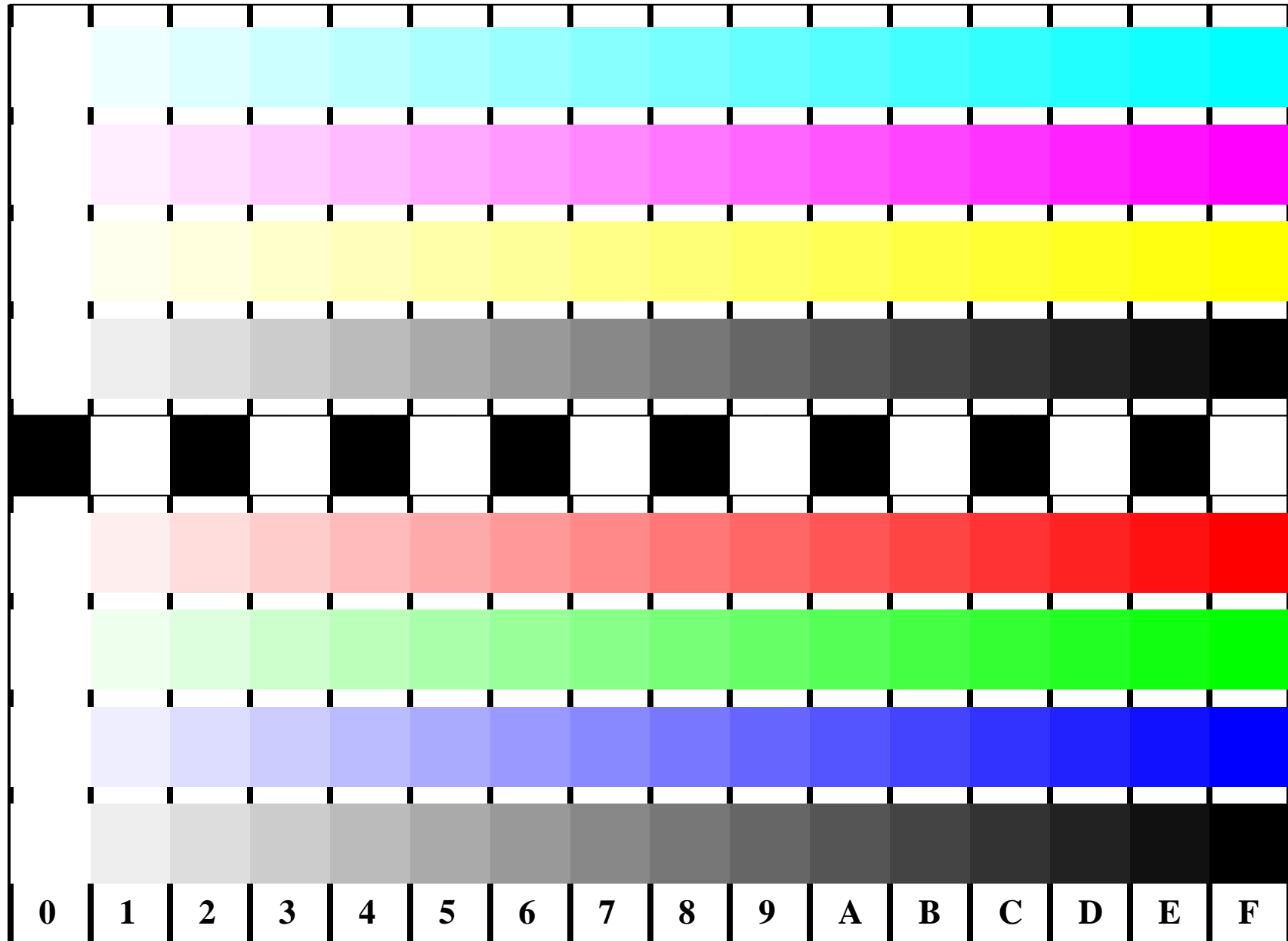


See for similar files: <http://www.ps.bam.de/IE95/IE95.HTM>
 Information and Order: <http://www.ps.bam.de> Version 2.0, io=1,1

BAM registration: 20030101-IE95/10B/B95E06NP.PS/.PDF
 application for monitors
 BAM material: code=rha4ta



Picture B4 and D4: 16 equidistant steps **B4**: W-C, W-M, W-Y and W-N; **D4**: W-O, W-L, W-V and W-N(CMY); Use of PS operator; B4: $olv^* \text{ setrgbcolor} / w^* \text{ setgray}$; D4: $olv^* \text{ setrgbcolor}$ (only)

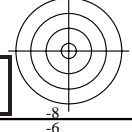
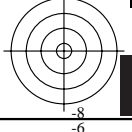


Fig. B4/D4 of ISO/IEC-test chart 2/4;

ISO/IEC 15775 and
 TR ISO/IEC 24705;

input: $olv^* \text{ setrgbcolor} / w^* \text{ setgray}$
 output: no change compared to input

