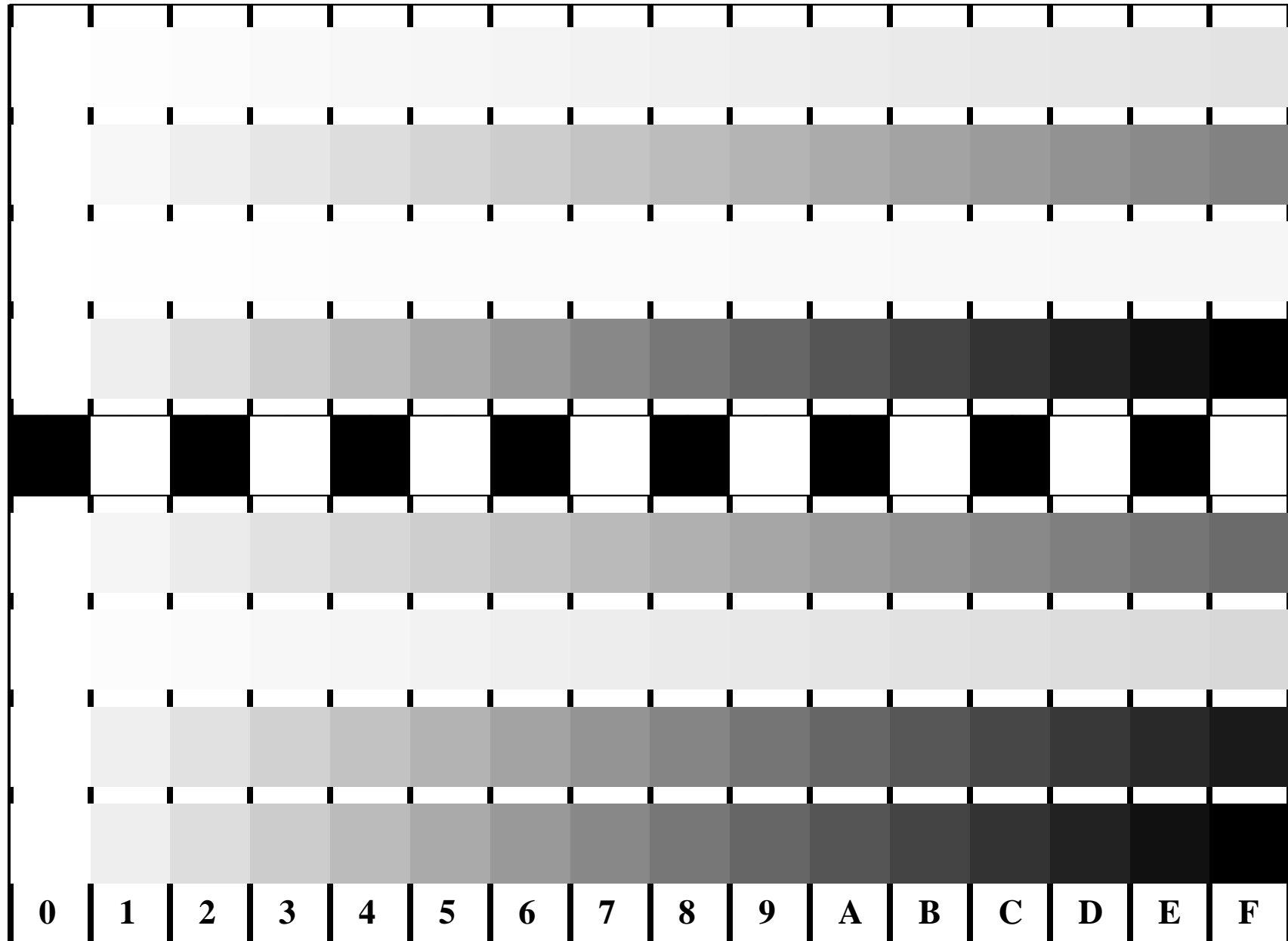


See for similar files: <http://www.ps.bam.de/IE95/IE95.HTM>  
 Information and Order: <http://www.ps.bam.de> Version 2.0, io=1,7; iTRS; oOLS, CIEXYZ

BAM registration: 20030101-JE95/10B/B95E07FP.PS/.PDF BAM material: code=tha4ta  
 application for monitors, Yr=2.5, XYZ



**C**  
*olv\**  
**M**  
*o0v\**  
**Y**  
*o10\**  
**N**  
*w\**  
**O**  
*o00\**  
**L**  
*o10\**  
**V**  
*oov\**  
**N**  
*www\**  
 \*=input

Picture B4 and D4: 16 equidistant steps **B4**: W-C, W-M, W-Y and W-N; **D4**: W-O, W-L, W-V and W-N(CMY); Use of PS operator; B4: *olv\* setrgbcolor / w\* setgray*; D4: *olv\* setrgbcolor* (only)

Fig. B4/D4 of ISO/IEC-test chart 2/4;

ISO/IEC 15775 and  
 TR ISO/IEC 24705;

input: *olv\* setrgbcolor / w\* setgray*  
 output: *w\* setgray*

