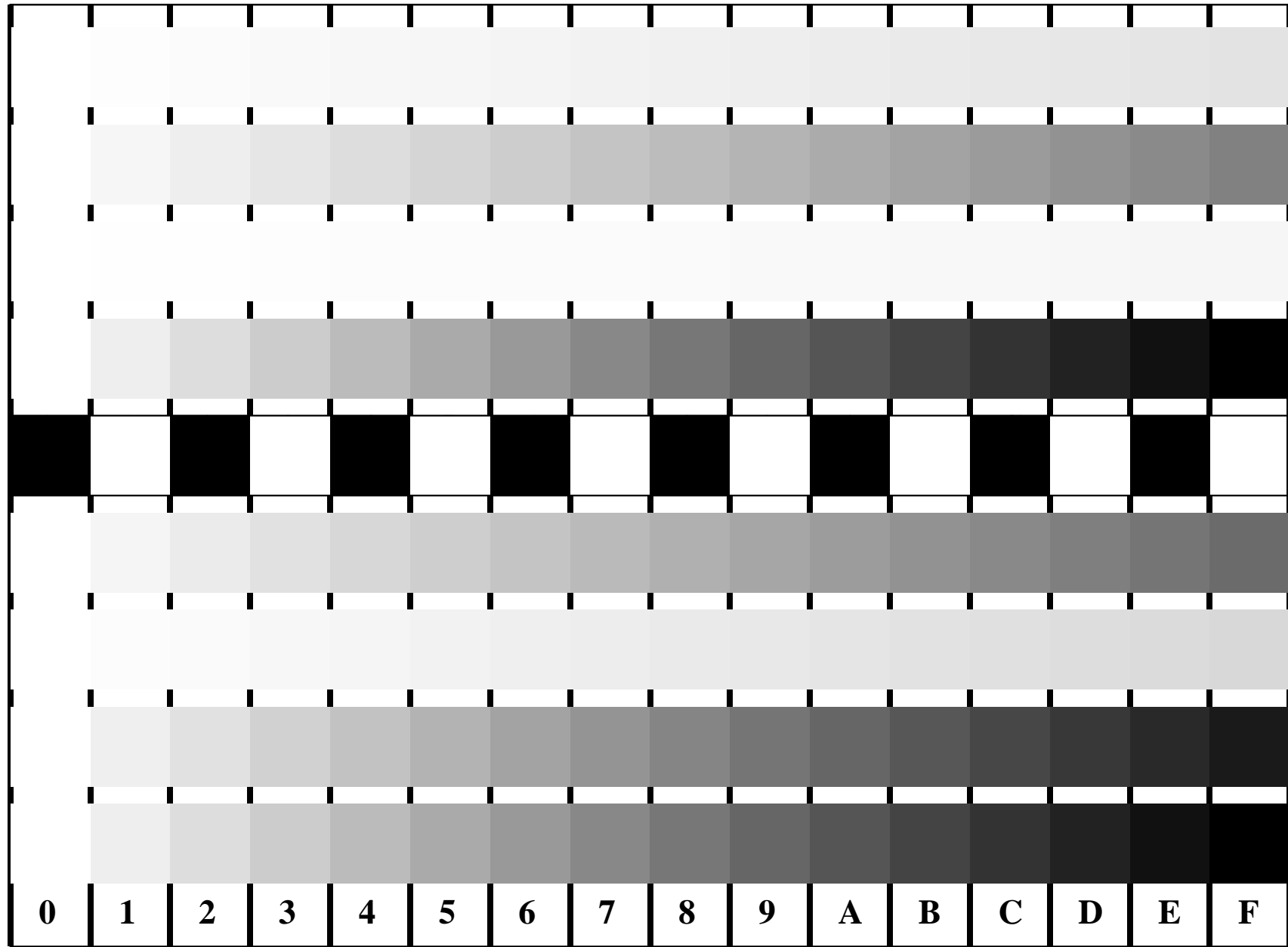


See for similar files: <http://www.ps.bam.de/IE95/IE95.HTM>
 Information and Order: <http://www.ps.bam.de> Version 2.0, io=1,7; iTRS; oOLS, CIEXYZ

BAM registration: 20030101-JE95/10D/D95E07FP.PS/.PDF BAM material: code=tha4ta
 application for monitors, Yr=7.5, XYZ



Picture B4 and D4: 16 equidistant steps **B4**: W-C, W-M, W-Y and W-N; **D4**: W-O, W-L, W-V and W-N(CMY); Use of PS operator; B4: `olv* setrgbcolor / w* setgray`; D4: `olv* setrgbcolor` (only)

Fig. B4/D4 of ISO/IEC-test chart 2/4;

ISO/IEC 15775 and
 TR ISO/IEC 24705;

input: `olv* setrgbcolor / w* setgray`
 output: `w* setgray`

