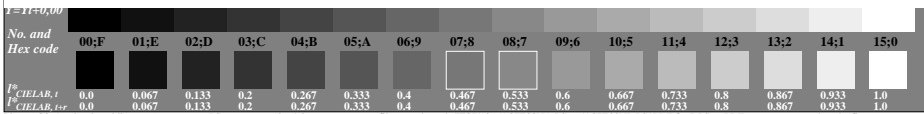


www.ps.bam.de/KE87/A87E00N1.PS/.TXT; start output
 N: No Output Linearization (OL) data in File (F), Startup (S) or Device (D)

See for similar files: <http://www.ps.bam.de/KE87/>
 Information and Order: <http://www.ps.bam.de> Version 2.0, io=1,1

BAM registration: 20031201-KE87/A87E00N1.PS/.TXT BAM material: code=thata
 Bottom part of page: application for monitors, Yr=0.0, XYZ



Picture C3: 16 visual equidistant L^* -grey steps; PS operator: $w^*lin\ 1.0\ exp\ setgray$; use file www.ps.bam.de/KE87/10A/A87E00N1.PS or [/A87E00NP.PS](http://www.ps.bam.de/KE87/E00N1.PS) for DPS or PDF systems to complete the figure

ISO/IEC-test chart no. 3A according to ISO/IEC 15775 and DIS ISO/IEC 19839-X; input: $w^*lin\ 1.0\ exp\ setgray$
 output: $w^*lin\ 1.0\ exp\ setgray$