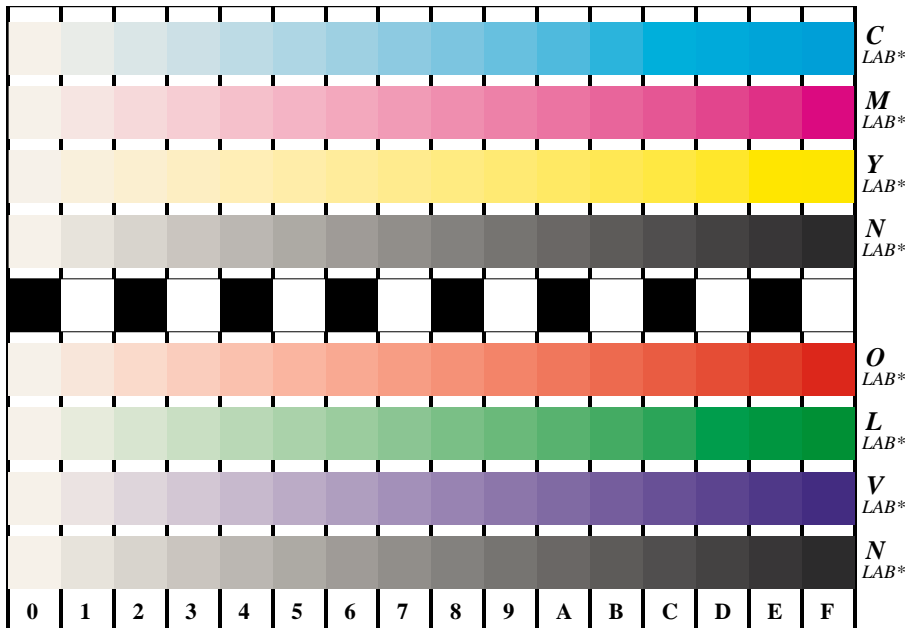


See for similar files: <http://www.ps.bam.de/KE95/KE95.HTM>
 Information and Order: <http://www.ps.bam.de> Version 2.0, io=5,5



BAM registration: 20030101-KE95/A95E00N1.PS/.TXT
 application for monitors

BAM material: code=thata

Figure B4 and D4 of the ISO/IEC-test charts no. 2 and 4; 16 visual equidistant steps of colour series; Use of the PS operator *LAB* setcolor*

Fig. B4/D4 of ISO/IEC-test chart 2/4; ISO/IEC 15775 and TR ISO/IEC 24705; input: *LAB* setcolor*
 output: *no change compared to input*