

See for similar files: <http://www.ps.bam.de/KE95/KE95.HTM>
 Information and Order: <http://www.ps.bam.de> Version 2.0, io=5,0; iOL\$; oOL\$; CIEXYZ

BAM registration: 20030101-KE95/C95E00F1.PS/.TXT
 application for monitors, Yr=5,0, XYZ
 BAM material: code=thata

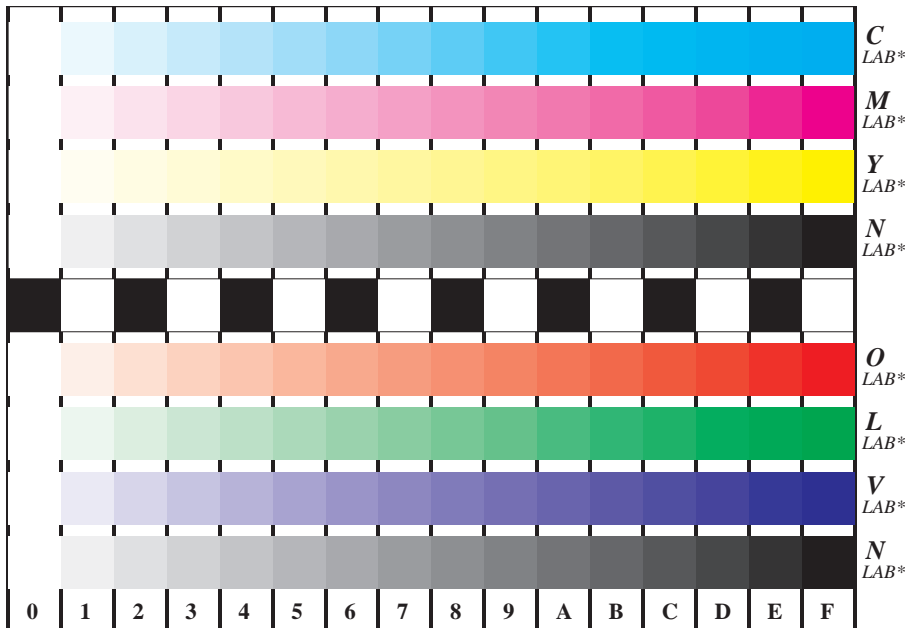


Figure B4 and D4 of the ISO/IEC-test charts no. 2 and 4; 16 visual equidistant steps of colour series; Use of the PS operator LAB^* setcolor

Fig. B4/D4 of ISO/IEC-test chart 2/4; ISO/IEC 15775 and TR ISO/IEC 24705; input: LAB^* setcolor
 output: $cmY0^*/000n^*$ setcmYkcolor