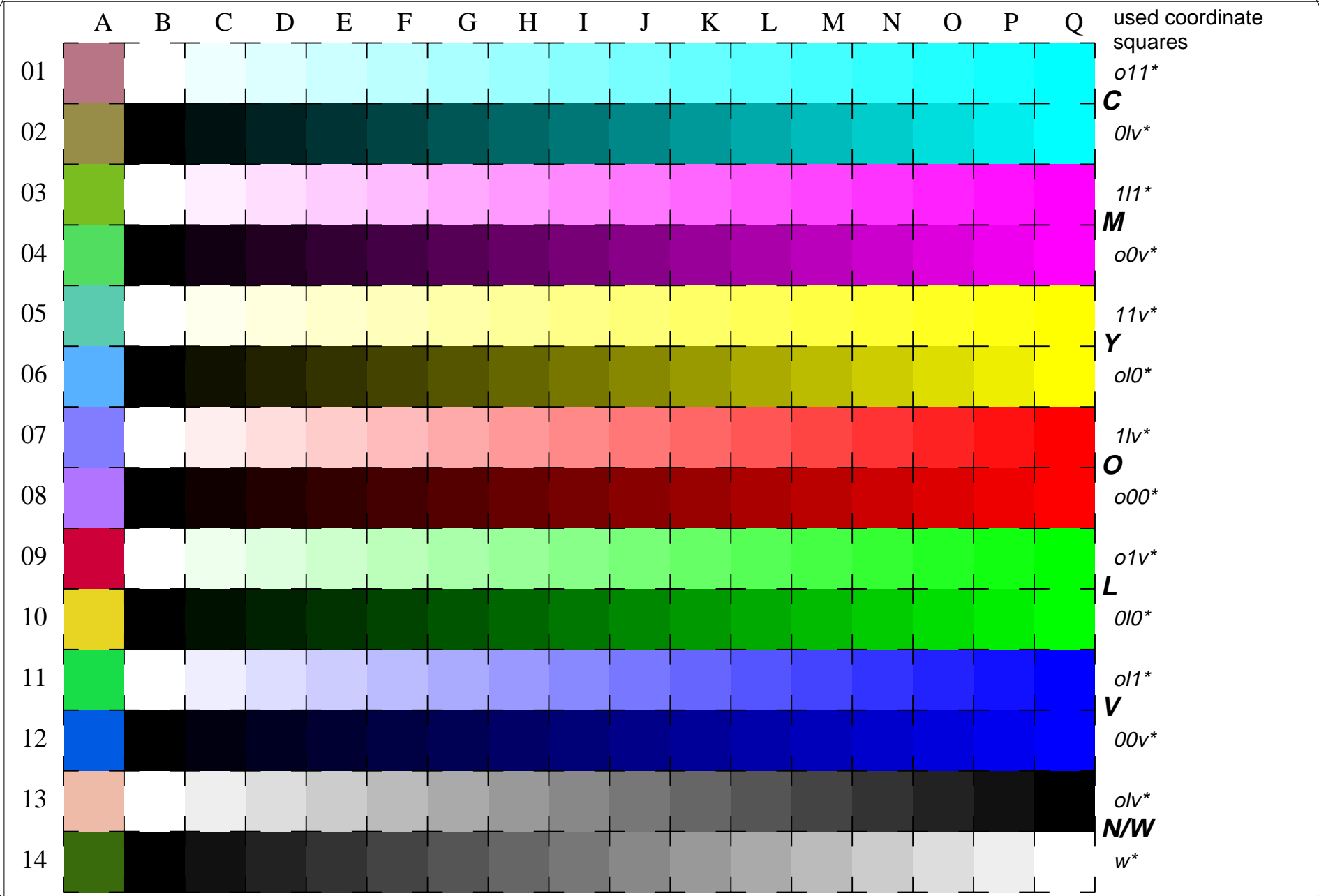


See for similar files: <http://www.ps.bam.de/LE01/LE01.HTM>  
 Information and Order: <http://www.ps.bam.de> Version 2.0, io=1,3; iORS; oORS, CIELAB

BAM registration: 20030101-LE01/10L/L01E03FP.PS/.PDF BAM material: code=rha4ta  
 application for measurement of monitor (Yr=2.5) and printer output



used coordinate squares

011\*  
 C  
 0lv\*  
 111\*  
 M  
 o0v\*  
 11v\*  
 Y  
 o10\*  
 1lv\*  
 O  
 o00\*  
 o1v\*  
 L  
 o10\*  
 o11\*  
 V  
 o0v\*  
 olv\*  
 N/W  
 w\*

16 equidistant CIELAB steps: C-W, C-N, M-W, M-N, Y-W, Y-N, O-W, O-N, L-W, L-N, V-W, V-N, N-W (OLV), W-N and 14 CIE-test colours (left)

Test chart LE01: 16 CIELAB steps of ISO/IEC 15775  
 Chromatic-White, Chromatic-Black, Black-White  
 input(ORS18): olv\* setrgbcolor  
 output(ORS18): olv\* / www\* setrgbcolor

