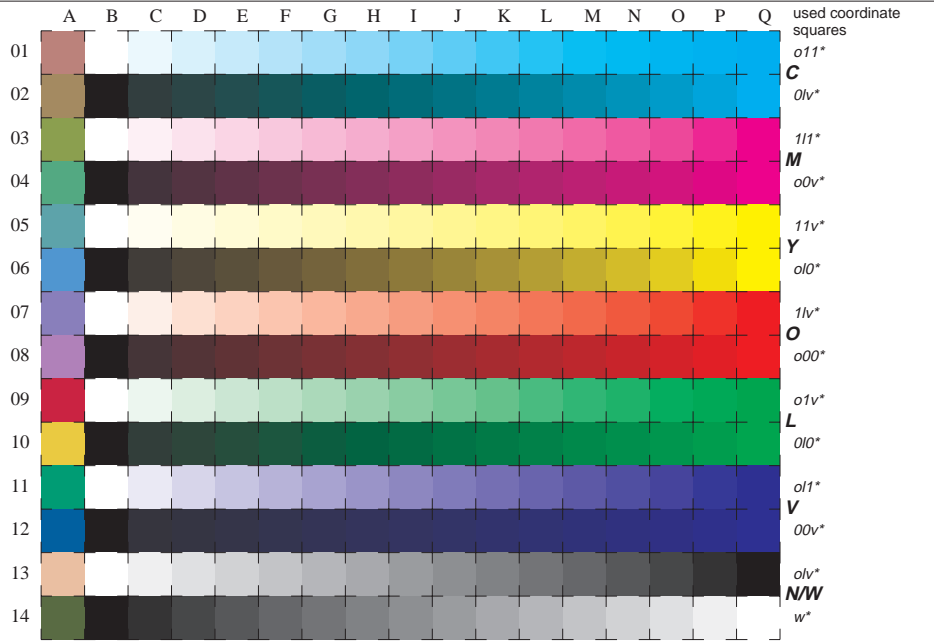


See for similar files: <http://www.ps.bam.de/LE01/LE01.HTM>
 Information and Order: <http://www.ps.bam.de> Version 2.0, io=1,0; iORS; oORS, CIELAB



BAM registration: 20030101-LE01/L01E00F1.PS/.TXT
 application for measurement of monitor (Y1=2.5) and printer output
 BAM material: code=thata

16 equidistant CIELAB steps: C-W, C-N, M-W, M-N, Y-W, Y-N, O-W, O-N, L-W, L-N, V-W, V-N, N-W (OLV), W-N and 14 CIE-test colours (left)

Test chart LE01: 16 CIELAB steps of ISO/IEC 15775
 Chromatic-White, Chromatic-Black, Black-White
 input(ORS18): $olv^* \text{ setrgbcolor}$
 output(ORS18): $cmy0^*/1000n^* \text{ setcmykcolor}$