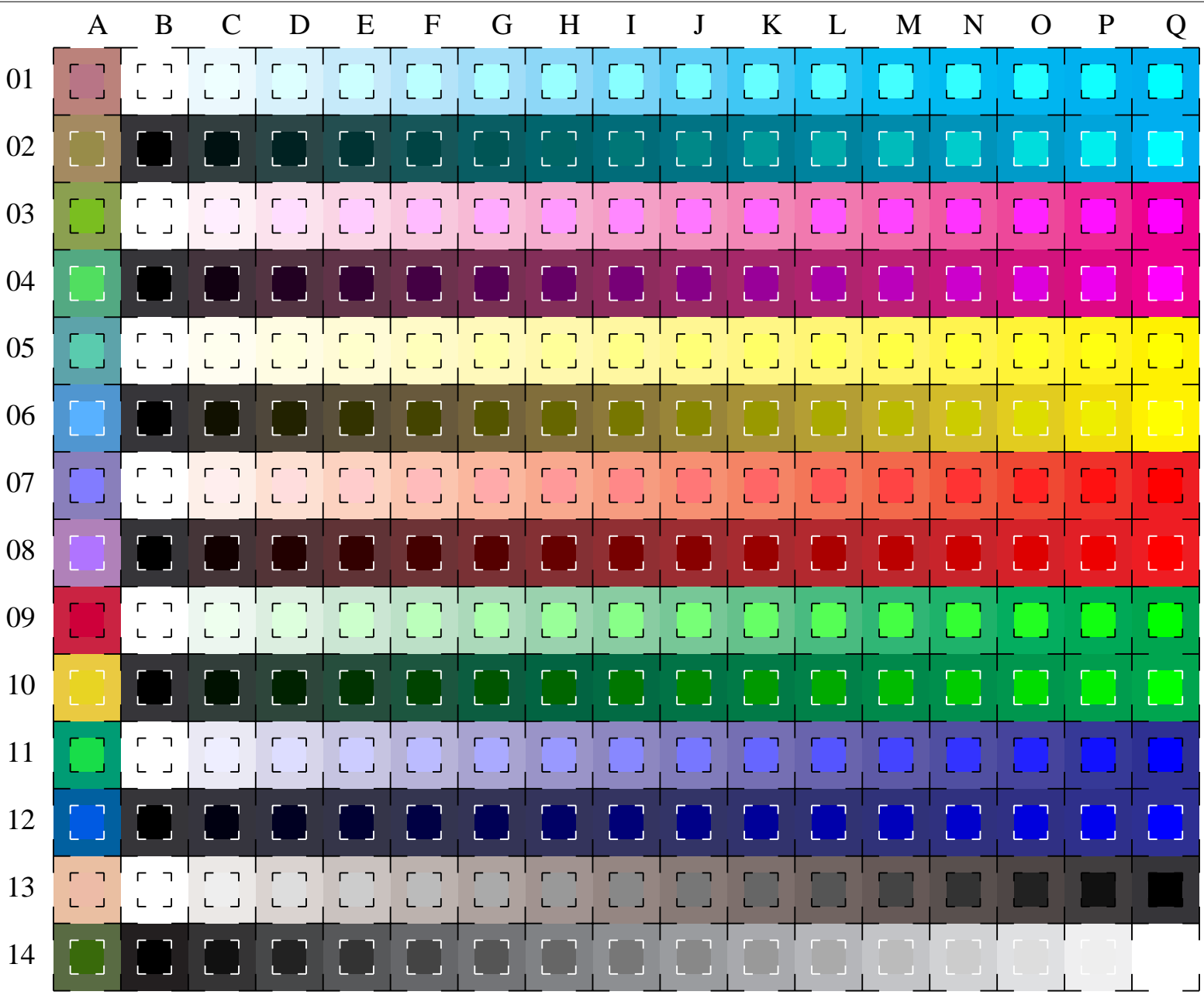




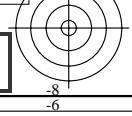
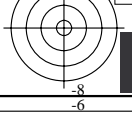
See for similar files: <http://www.ps.bam.de/LE04/LE04.HTM>
 Information and Order: <http://www.ps.bam.de>
 Version 2.0, io=0&1,0&1

BAM registration: 20030101-LE04/10L/L04E00NP.PS/.PDF
 application for measurement of monitor (Yr=2.5) and printer output
 BAM material: code=tha4ta



used coordinate
surround center

C	<i>c000*</i>	<i>o11*</i>
	<i>1my0*</i>	<i>0lv*</i>
M	<i>0m00*</i>	<i>111*</i>
	<i>c1y0*</i>	<i>o0v*</i>
Y	<i>00y0*</i>	<i>11v*</i>
	<i>cm10*</i>	<i>o10*</i>
O	<i>0my0*</i>	<i>1lv*</i>
	<i>c110*</i>	<i>o00*</i>
L	<i>c0y0*</i>	<i>o1v*</i>
	<i>1m10*</i>	<i>010*</i>
V	<i>cm00*</i>	<i>o11*</i>
	<i>11y0*</i>	<i>00v*</i>
N/W	<i>cmv0*</i>	<i>olv*</i>
	<i>000k*</i>	<i>w*</i>



16 equidistant CIELAB steps: C-W, C-N, M-W, M-N, Y-W, Y-N, O-W, O-N, L-W, L-N, V-W, V-N, N-W, W-N and 14 CIE-test colours (left)

Test chart LE04: 16 CIELAB steps of ISO/IEC 15775
 Chromatic-White, Chromatic-Black, Black-White

input(ORS18): *cmyn*/olv* set(cmyk/rgb)color*
 output(ORS18): *no change compared to input*

