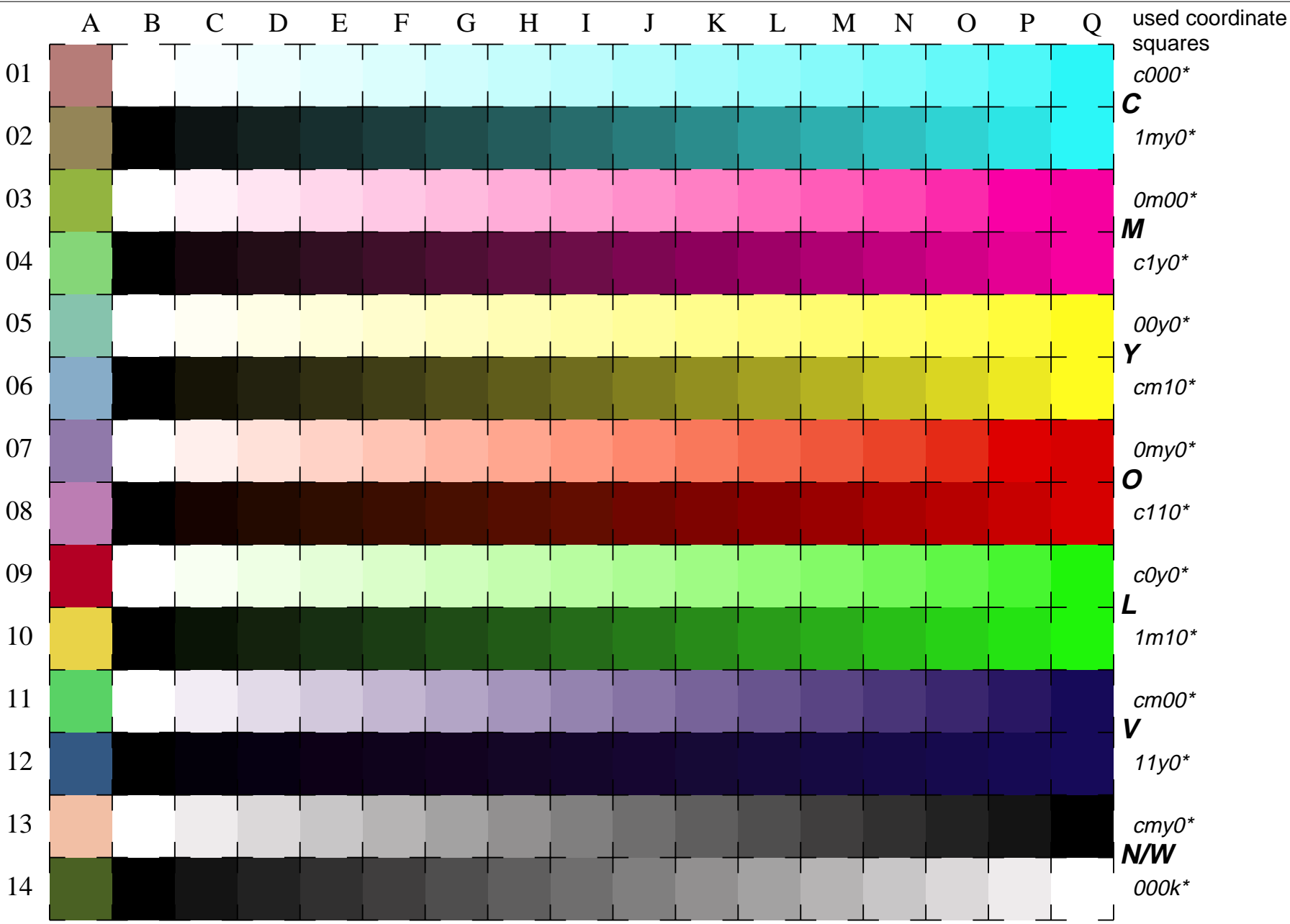


See for similar files: <http://www.ps.bam.de/LE10/10S/S10E04FP.PS/.PDF>  
 Information and Order: <http://www.ps.bam.de/LE10/LE10.HTM>  
 Version 2.0, io=0,4; iTLS; oTLS, CIELAB

BAM registration: 20030101-LE10/10S/S10E04FP.PS/.PDF  
 application for measurement of monitor (Yr=2.5) and printer output  
 BAM material: code=tha4ta



used coordinate squares

01 *c000\**

02 **C** *1m00\**

03 *0m00\**

04 **M** *c1y0\**

05 *00y0\**

06 **Y** *cm10\**

07 *0my0\**

08 **O** *c110\**

09 *c0y0\**

10 **L** *1m10\**

11 *cm00\**

12 **V** *11y0\**

13 *cm00\**

14 **N/W** *000k\**

16 equidistant CIELAB steps: C-W, C-N, M-W, M-N, Y-W, Y-N, O-W, O-N, L-W, L-N, V-W, V-N, N-W (CMY), W-N and 14 CIE-test colours (left)

Test chart LE10: 16 CIELAB steps of ISO/IEC 15775 input ,TLS00: olv\* setrgbcolor/LAB\* setcolor  
 Chromatic-White, Chromatic-Black, Black-White output ,TLS00: lab\* setcolor

