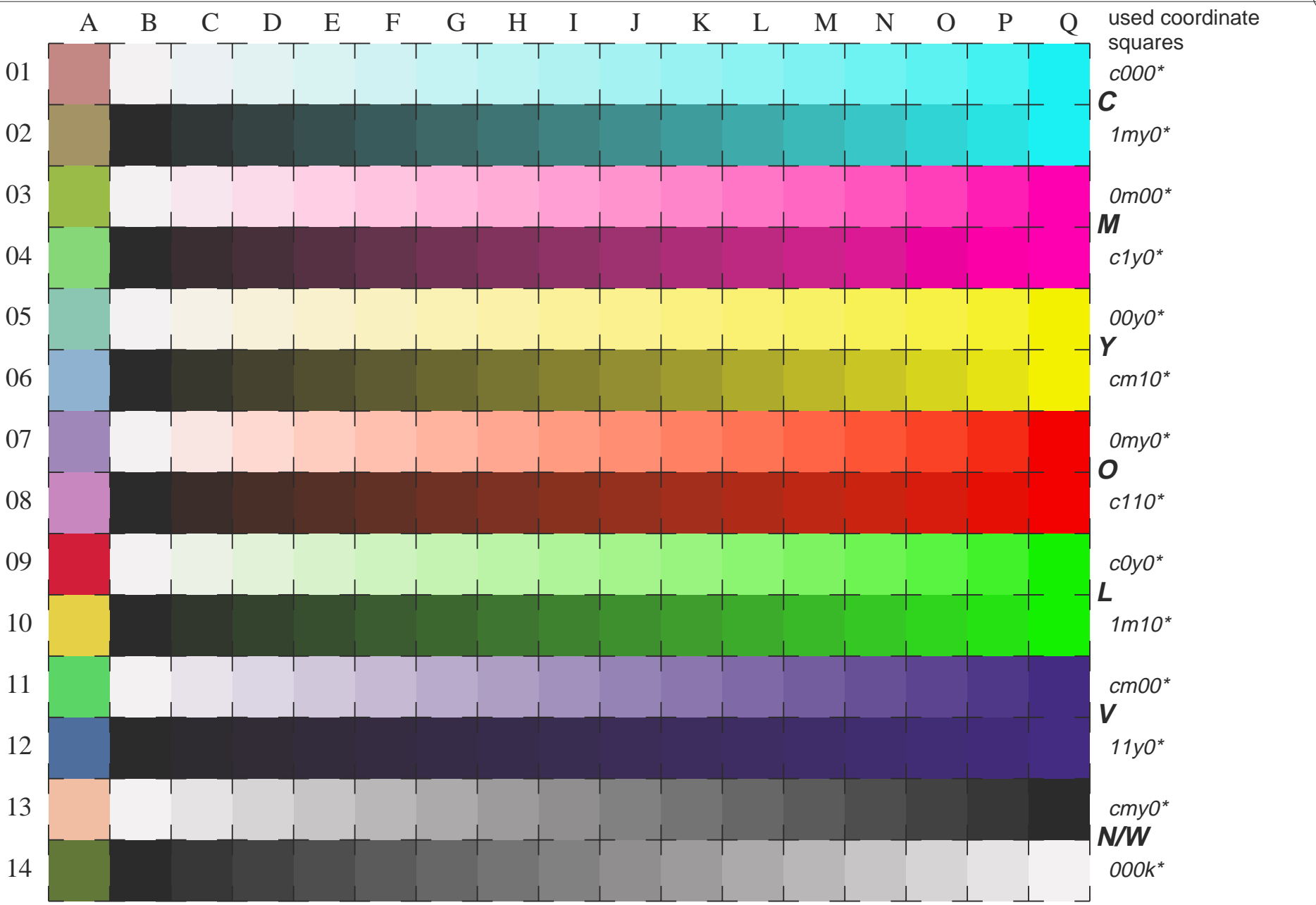


See for similar files: <http://www.ps.bam.de/LE10/10S/S10E05FP.PS/.PDF>
 Information and Order: <http://www.ps.bam.de/LE10/10S/S10E05FP.PS/.PDF>
 Version 2.0, io=0,5; iTLS; oTLS, CIELAB

BAM registration: 20030101-LE10/10S/S10E05FP.PS/.PDF
 application for measurement of monitor (Yr=2.5) and printer output
 BAM material: code=tha4ta



used coordinate squares
*c000**

C

*1m00**

*0m00**

M

*c1y0**

*00y0**

Y

*cm10**

*0my0**

O

*c110**

*c0y0**

L

*1m10**

*cm00**

V

*11y0**

*cm00**

N/W

*000k**

16 equidistant CIELAB steps: C-W, C-N, M-W, M-N, Y-W, Y-N, O-W, O-N, L-W, L-N, V-W, V-N, N-W (CMY), W-N and 14 CIE-test colours (left)

Test chart LE10: 16 CIELAB steps of ISO/IEC 15775
 Chromatic-White, Chromatic-Black, Black-White
 input ,TLS00: olv* setrgbcolor/LAB* setcolor
 output ,TLS00: LAB* setcolor

