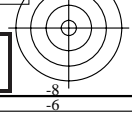
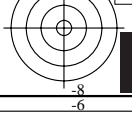
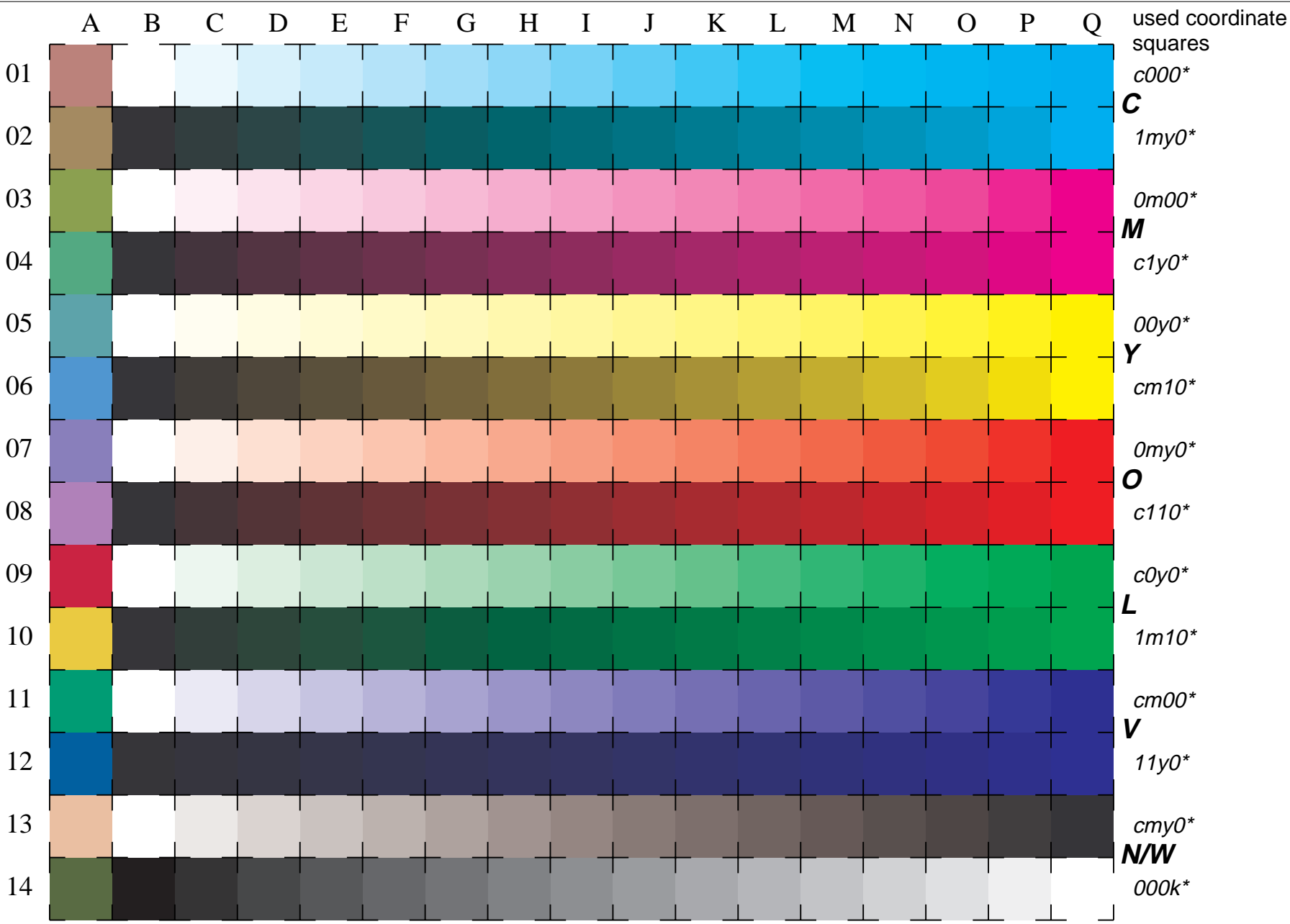


See for similar files: <http://www.ps.bam.de/LE10/10S/S10E06NP.PS/.PDF>
 Information and Order: <http://www.ps.bam.de/LE10/LE10.HTM>
 Version 2.0, io=0,0

BAM registration: 20030101-LE10/10S/S10E06NP.PS/.PDF BAM material: code=rha4ta
 application for measurement of monitor (Yr=2.5) and printer output



16 equidistant CIELAB steps: C-W, C-N, M-W, M-N, Y-W, Y-N, O-W, O-N, L-W, L-N, V-W, V-N, N-W (CMY), W-N and 14 CIE-test colours (left)

