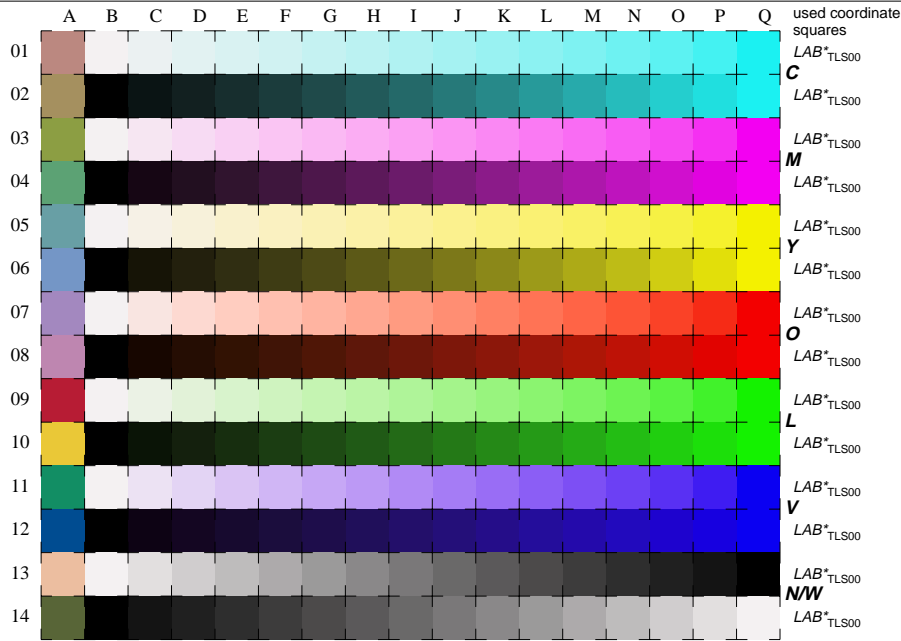


See for similar files: <http://www.ps.bam.de/LE12/LE12.HTM>  
 Information and Order: <http://www.ps.bam.de> Version 2.0, io=0.0

BAM registration: 20030101-LE12/L12E00N1.PS/.TXT  
 application for measurement of monitor (Y1=2.5) and printer output  
 BAM material: code=thata



16 equidistant CIELAB steps: C-W, C-N, M-W, M-N, Y-W, Y-N, O-W, O-N, L-W, L-N, V-W, V-N, N-W, W-N and 14 CIE-test colours (left)

Test chart LE12: 16 CIELAB steps of ISO/IEC 15775 input ,TLS00: LAB\* setcolor/cmy\* setcmyk..  
 Chromatic-White, Chromatic-Black, Black-White output ,TLS00: no change compared to input

